



ELECTRONIC COPY

LG749521216
Report verification at igi.org



November 14, 2025

IGI Report Number **LG749521216**

Description **LABORATORY GROWN DIAMOND**

Shape and Cutting Style **MARQUISE BRILLIANT**

Measurements **13.20 X 6.43 X 3.96 MM**

GRADING RESULTS

Carat Weight **1.90 CARAT**

Color Grade **F**

Clarity Grade **VS 1**

November 14, 2025
IGI Report Number **LG749521216**
Description **LABORATORY GROWN DIAMOND**
Shape and Cutting Style **MARQUISE BRILLIANT**
Measurements **13.20 X 6.43 X 3.96 MM**

GRADING RESULTS

Carat Weight **1.90 CARAT**

Color Grade **F**

Clarity Grade **VS 1**

ADDITIONAL GRADING INFORMATION

Polish **EXCELLENT**

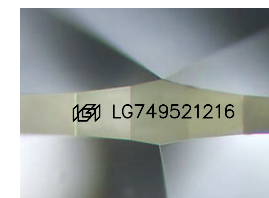
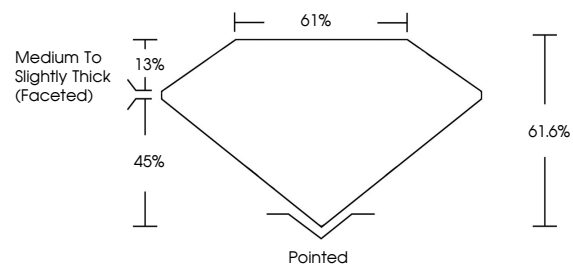
Symmetry **EXCELLENT**

Fluorescence **NONE**

Inscription(s) **IGI LG749521216**

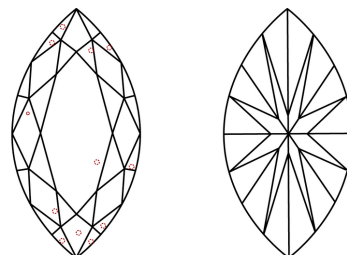
Comments: This Laboratory Grown Diamond was created by Chemical Vapor Deposition (CVD) growth process. Type IIa

PROPORTIONS



Sample Image Used

CLARITY CHARACTERISTICS



KEY TO SYMBOLS

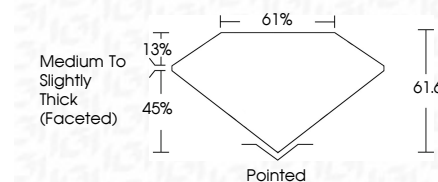
Red symbols indicate internal characteristics.
Green symbols indicate external characteristics.

COLOR

D E F G H I J Faint Very Light Light

CLARITY

FL	IF	VS ¹⁻²	VS ¹⁻²	SI ¹⁻²	I ¹⁻³
Flawless	Internally Flawless	Very Very Slightly Included	Very Slightly Included	Slightly Included	Included



ADDITIONAL GRADING INFORMATION

Polish **EXCELLENT**

Symmetry **EXCELLENT**

Fluorescence **NONE**

Inscription(s) **IGI LG749521216**

Comments: This Laboratory Grown Diamond was created by Chemical Vapor Deposition (CVD) growth process. Type IIa



November 14, 2025
IGI Report No **LG749521216**
MARQUISE BRILLIANT
13.20 X 6.43 X 3.96 MM
1.90 CARAT
F
Color Grade
VS 1
Clarity Grade
61.6%
0.1%
Table
61%
Girdle
Medium to Slightly Thick (Faceted)
Pointed
Culet
EXCELLENT
Polish
EXCELLENT
Symmetry
EXCELLENT
Fluorescence
NONE
Inscription(s)
IGI LG749521216
Comments: This Laboratory Grown Diamond was created by Chemical Vapor Deposition (CVD) growth process. Type IIa