



INTERNATIONAL GEMOLOGICAL INSTITUTE

ELECTRONIC COPY

LABORATORY GROWN DIAMOND REPORT

November 15, 2025
IGI Report Number **LG749530528**
Description **LABORATORY GROWN DIAMOND**
Shape and Cutting Style **CUT CORNERED RECTANGULAR MODIFIED
BRILLIANT**
Measurements **5.08 X 4.06 X 2.76 MM**

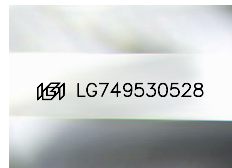
GRADING RESULTS

Carat Weight **0.55 CARAT**
Color Grade **G**
Clarity Grade **VS 1**

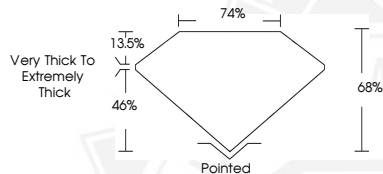
ADDITIONAL GRADING INFORMATION

Polish **VERY GOOD**
Symmetry **VERY GOOD**
Fluorescence **NONE**
Inscription(s) **(IGI) LG749530528**

Comments: As Grown - No indication of post-growth treatment.
This Laboratory Grown Diamond was created by High Pressure High
Temperature (HPHT) growth process.
Type II
Faint Blue



Sample Image Used



November 15, 2025

IGI Report Number **LG749530528**
CUT CORNERED RECTANGULAR
MODIFIED BRILLIANT
LABORATORY GROWN DIAMOND
5.08 X 4.06 X 2.76 MM
Carat Weight **0.55 CARAT**
Color Grade **G**
Clarity Grade **VS 1**
Polish **VERY GOOD**
Symmetry **VERY GOOD**
Fluorescence **NONE**
Inscription(s) **(IGI) LG749530528**

Comments: As Grown - No
indication of post-growth
treatment. This Laboratory Grown
Diamond was created by High
Pressure High Temperature (HPHT)
growth process. Type II Faint Blue



November 15, 2025

IGI Report Number **LG749530528**
CUT CORNERED RECTANGULAR
MODIFIED BRILLIANT
LABORATORY GROWN DIAMOND
5.08 X 4.06 X 2.76 MM
Carat Weight **0.55 CARAT**
Color Grade **G**
Clarity Grade **VS 1**
Polish **VERY GOOD**
Symmetry **VERY GOOD**
Fluorescence **NONE**
Inscription(s) **(IGI) LG749530528**

Comments: As Grown - No
indication of post-growth
treatment. This Laboratory Grown
Diamond was created by High
Pressure High Temperature (HPHT)
growth process. Type II Faint Blue



THIS DOCUMENT WAS PRODUCED WITH THE FOLLOWING SECURITY MEASURES: SPECIAL DOCUMENT PAPER, INK SCREENS, WATERMARK,
BACKGROUND DESIGNS, HOLOGRAM AND OTHER SECURITY FEATURES NOT LISTED AND DO EXCEED DOCUMENT SECURITY INDUSTRY GUIDELINES.

For terms & conditions and to verify this report, please visit www.igi.org