



LABORATORY GROWN DIAMOND REPORT

November 17, 2025
 IGI Report Number **LG749532490**
 Description **LABORATORY GROWN DIAMOND**
 Shape and Cutting Style **ROUND BRILLIANT**
 Measurements **3.83 - 3.86 X 2.32 MM**

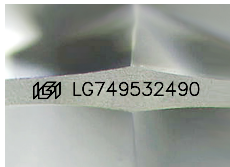
GRADING RESULTS

Carat Weight **0.21 CARAT**
 Color Grade **E**
 Clarity Grade **VS 2**
 Cut Grade **VERY GOOD**

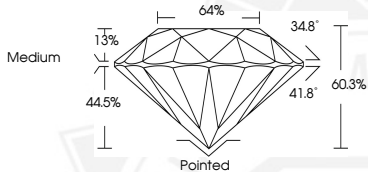
ADDITIONAL GRADING INFORMATION

Polish **VERY GOOD**
 Symmetry **VERY GOOD**
 Fluorescence **NONE**
 Inscription(s) **IGI LG749532490**

Comments: This Laboratory Grown Diamond was created by
 Chemical Vapor Deposition (CVD) growth process.
 Type IIa



Sample Image Used



November 17, 2025
 IGI Report Number **LG749532490**
 ROUND BRILLIANT
 LABORATORY GROWN DIAMOND
3.83 - 3.86 X 2.32 MM
 Carat Weight **0.21 CARAT**
 Color Grade **E**
 Clarity Grade **VS 2**
 Cut Grade **VERY GOOD**
 Polish **VERY GOOD**
 Symmetry **VERY GOOD**
 Fluorescence **NONE**
 Inscription(s) **IGI LG749532490**
 Comments: This Laboratory Grown
 Diamond was created by
 Chemical Vapor Deposition (CVD)
 growth process. Type IIa



November 17, 2025
 IGI Report Number **LG749532490**
 ROUND BRILLIANT
 LABORATORY GROWN DIAMOND
3.83 - 3.86 X 2.32 MM
 Carat Weight **0.21 CARAT**
 Color Grade **E**
 Clarity Grade **VS 2**
 Cut Grade **VERY GOOD**
 Polish **VERY GOOD**
 Symmetry **VERY GOOD**
 Fluorescence **NONE**
 Inscription(s) **IGI LG749532490**
 Comments: This Laboratory Grown
 Diamond was created by
 Chemical Vapor Deposition (CVD)
 growth process. Type IIa

THIS DOCUMENT WAS PRODUCED WITH THE FOLLOWING SECURITY MEASURES: SPECIAL DOCUMENT PAPER, INK SCREENS, WATERMARK, BACKGROUND DESIGNS, HOLOGRAM AND OTHER SECURITY FEATURES NOT LISTED AND DO EXCEED DOCUMENT SECURITY INDUSTRY GUIDELINES.