



Light Performance Grade: Exceptional



December 15, 2025 IGI Report Number LG749534874 Description LABORATORY GROWN DIAMOND Shape and Cutting Style ROUND BRILLIANT Measurements 6.46 - 6.51 X 3.97 MM

ELECTRONIC COPY LABORATORY GROWN DIAMOND REPORT

December 15, 2025 IGI Report Number LG749534874 Description LABORATORY GROWN DIAMOND Shape and Cutting Style ROUND BRILLIANT Measurements 6.46 - 6.51 x 3.97 mm

GRADING RESULTS

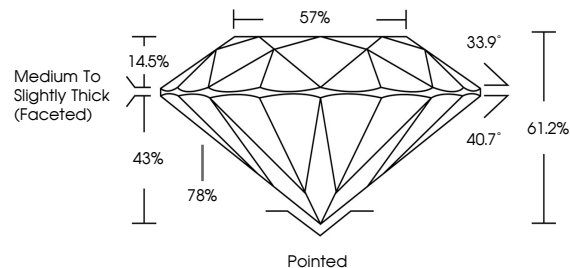
Carat Weight 1.02 CARAT Color Grade D Clarity Grade VVS 2 Cut Grade IDEAL

ADDITIONAL GRADING INFORMATION

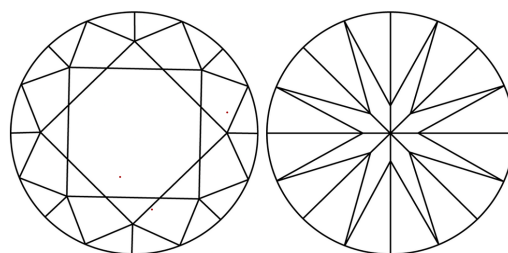
Polish EXCELLENT Symmetry EXCELLENT Fluorescence NONE

Inscription(s) IGI LG749534874 Comments: This Laboratory Grown Diamond was created by Chemical Vapor Deposition (CVD) growth process. Type IIa

PROPORTIONS

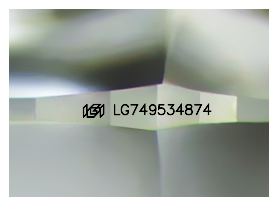


CLARITY CHARACTERISTICS

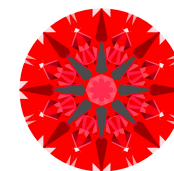


KEY TO SYMBOLS

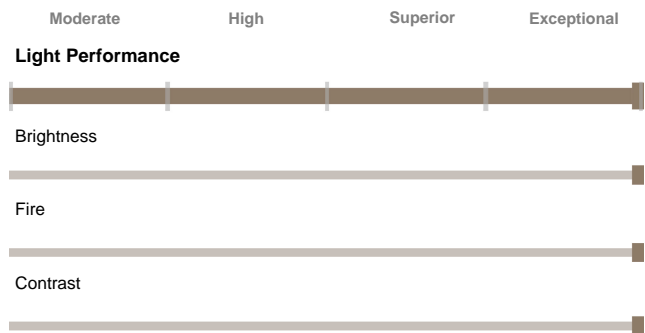
Red symbols indicate internal characteristics. Green symbols indicate external characteristics.



Sample Image Used



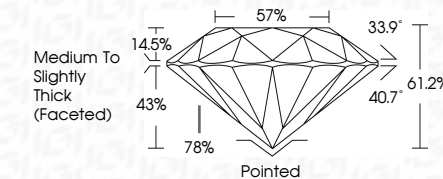
Structured Light Environment Representation



COLOR



CLARITY



ADDITIONAL GRADING INFORMATION

Polish EXCELLENT Symmetry EXCELLENT Fluorescence NONE Inscription(s) IGI LG749534874 Comments: This Laboratory Grown Diamond was created by Chemical Vapor Deposition (CVD) growth process. Type IIa



Summary table of grading results: December 15, 2025, IGI Report No. LG749534874, ROUND BRILLIANT, 6.46 - 6.51 X 3.97 MM, 1.02 CARAT, Color Grade D, Clarity Grade VVS 2, Depth 61.2%, Table 57%, Grade Medium To Slightly Thick (Faceted), Polish EXCELLENT, Symmetry EXCELLENT, Fluorescence NONE, Inscription(s) IGI LG749534874, Comments: This Laboratory Grown Diamond was created by Chemical Vapor Deposition (CVD) growth process. Type IIa

