



INTERNATIONAL GEMOLOGICAL INSTITUTE

LABORATORY GROWN DIAMOND REPORT

November 17, 2025

IGI Report Number

LG749541121

Description

LABORATORY GROWN DIAMOND

Shape and Cutting Style

SQUARE CUSHION MODIFIED BRILLIANT

Measurements

4.74 X 4.68 X 3.15 MM

GRADING RESULTS

Carat Weight

0.55 CARAT

Color Grade

F

Clarity Grade

VS 2

ADDITIONAL GRADING INFORMATION

Polish

VERY GOOD

Symmetry

VERY GOOD

Fluorescence

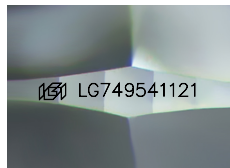
NONE

Inscription(s)

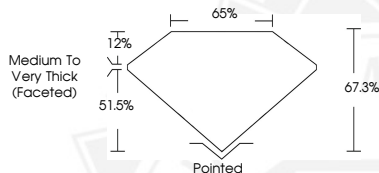
IGI LG749541121

Comments: This Laboratory Grown Diamond was created by Chemical Vapor Deposition (CVD) growth process.
Type IIa

ELECTRONIC COPY



Sample Image Used



THIS DOCUMENT WAS PRODUCED WITH THE FOLLOWING SECURITY MEASURES: SPECIAL DOCUMENT PAPER, INK SCREENS, WATERMARK, BACKGROUND DESIGNS, HOLOGRAM AND OTHER SECURITY FEATURES NOT LISTED AND DO EXCEED DOCUMENT SECURITY INDUSTRY GUIDELINES.

For terms & conditions and to verify this report, please visit www.igi.org



November 17, 2025

IGI Report Number LG749541121

SQUARE CUSHION MODIFIED
BRILLIANT

LABORATORY GROWN DIAMOND

4.74 X 4.68 X 3.15 MM

Carat Weight 0.55 CARAT

Color Grade F

Clarity Grade VS 2

Polish VERY GOOD

Symmetry VERY GOOD

Fluorescence NONE

Inscription(s) IGI LG749541121

Comments: This Laboratory Grown Diamond was created by Chemical Vapor Deposition (CVD) growth process. Type IIa



November 17, 2025

IGI Report Number LG749541121

SQUARE CUSHION MODIFIED
BRILLIANT

LABORATORY GROWN DIAMOND

4.74 X 4.68 X 3.15 MM

Carat Weight 0.55 CARAT

Color Grade F

Clarity Grade VS 2

Polish VERY GOOD

Symmetry VERY GOOD

Fluorescence NONE

Inscription(s) IGI LG749541121

Comments: This Laboratory Grown Diamond was created by Chemical Vapor Deposition (CVD) growth process. Type IIa