



November 25, 2025

**IGI Report Number LG749542450**  
**SQUARE EMERALD CUT**  
**LABORATORY GROWN DIAMOND**  
**4.26 X 4.20 X 2.64 MM**

**0.47 CARAT**  
**E**  
**VVS 2**  
**EXCELLENT**  
**VERY GOOD**  
**NONE**  
**IGI LG749542450**

Comments: This Laboratory Grown Diamond was created by Chemical Vapor Deposition (CVD) growth process. Type IIa

**LABORATORY GROWN DIAMOND REPORT**

November 25, 2025  
IGI Report Number **LG749542450**  
Description **LABORATORY GROWN DIAMOND**  
Shape and Cutting Style **SQUARE EMERALD CUT**  
Measurements **4.26 X 4.20 X 2.64 MM**

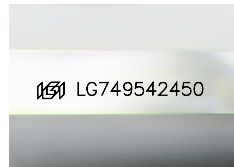
**GRADING RESULTS**

Carat Weight **0.47 CARAT**  
Color Grade **E**  
Clarity Grade **VVS 2**

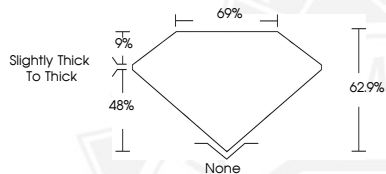
**ADDITIONAL GRADING INFORMATION**

Polish **EXCELLENT**  
Symmetry **VERY GOOD**  
Fluorescence **NONE**  
Inscription(s) **IGI LG749542450**

Comments: This Laboratory Grown Diamond was created by Chemical Vapor Deposition (CVD) growth process. Type IIa



Sample Image Used



November 25, 2025

**IGI Report Number LG749542450**  
**SQUARE EMERALD CUT**  
**LABORATORY GROWN DIAMOND**  
**4.26 X 4.20 X 2.64 MM**

**0.47 CARAT**  
**E**  
**VVS 2**  
**EXCELLENT**  
**VERY GOOD**  
**NONE**  
**IGI LG749542450**

Comments: This Laboratory Grown Diamond was created by Chemical Vapor Deposition (CVD) growth process. Type IIa



THIS DOCUMENT WAS PRODUCED WITH THE FOLLOWING SECURITY MEASURES: SPECIAL DOCUMENT PAPER, INK SCREENS, WATERMARK, BACKGROUND DESIGNS, HOLOGRAM AND OTHER SECURITY FEATURES NOT LISTED AND DO EXCEED DOCUMENT SECURITY INDUSTRY GUIDELINES.