



December 3, 2025

IGI Report Number **LG749543221**

**PEAR BRILLIANT**

**LABORATORY GROWN DIAMOND**

**8.90 X 5.29 X 3.48 MM**

Carat Weight	<b>0.96 CARAT</b>
Color Grade	<b>D</b>
Clarity Grade	<b>VVS 2</b>
Polish	<b>EXCELLENT</b>
Symmetry	<b>EXCELLENT</b>
Fluorescence	<b>NONE</b>
Inscription(s)	<b>IGI LG749543221</b>

Comments: This Laboratory Grown Diamond was created by Chemical Vapor Deposition (CVD) growth process. Type IIa

**LABORATORY GROWN DIAMOND REPORT**

December 3, 2025

IGI Report Number

**LG749543221**

Description

**LABORATORY GROWN DIAMOND**

Shape and Cutting Style

**PEAR BRILLIANT**

Measurements

**8.90 X 5.29 X 3.48 MM**

**GRADING RESULTS**

Carat Weight

**0.96 CARAT**

Color Grade

**D**

Clarity Grade

**VVS 2**

**ADDITIONAL GRADING INFORMATION**

Polish

**EXCELLENT**

Symmetry

**EXCELLENT**

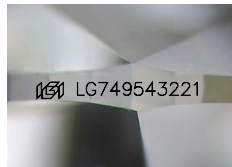
Fluorescence

**NONE**

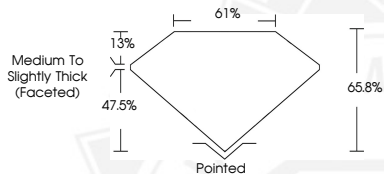
Inscription(s)

**IGI LG749543221**

Comments: This Laboratory Grown Diamond was created by Chemical Vapor Deposition (CVD) growth process. Type IIa



Sample Image Used



December 3, 2025

IGI Report Number **LG749543221**

**PEAR BRILLIANT**

**LABORATORY GROWN DIAMOND**

**8.90 X 5.29 X 3.48 MM**

Carat Weight	<b>0.96 CARAT</b>
Color Grade	<b>D</b>
Clarity Grade	<b>VVS 2</b>
Polish	<b>EXCELLENT</b>
Symmetry	<b>EXCELLENT</b>
Fluorescence	<b>NONE</b>
Inscription(s)	<b>IGI LG749543221</b>

Comments: This Laboratory Grown Diamond was created by Chemical Vapor Deposition (CVD) growth process. Type IIa



THIS DOCUMENT WAS PRODUCED WITH THE FOLLOWING SECURITY MEASURES: SPECIAL DOCUMENT PAPER, INK SCREENS, WATERMARK, BACKGROUND DESIGNS, HOLOGRAM AND OTHER SECURITY FEATURES NOT LISTED AND DO EXCEED DOCUMENT SECURITY INDUSTRY GUIDELINES.