



INTERNATIONAL GEMOLOGICAL INSTITUTE

ELECTRONIC COPY

LABORATORY GROWN DIAMOND REPORT

December 3, 2025

IGI Report Number

LG749543430

Description

LABORATORY GROWN DIAMOND

Shape and Cutting Style

ROUND BRILLIANT

Measurements

4.95 - 4.97 X 3.27 MM

GRADING RESULTS

Carat Weight

0.50 CARAT

Color Grade

E

Clarity Grade

VS 1

Cut Grade

GOOD

ADDITIONAL GRADING INFORMATION

Polish

VERY GOOD

Symmetry

EXCELLENT

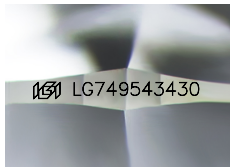
Fluorescence

NONE

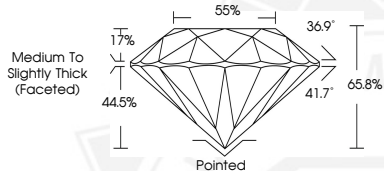
Inscription(s)

IGI LG749543430

Comments: This Laboratory Grown Diamond was created by Chemical Vapor Deposition (CVD) growth process. Type IIa



Sample Image Used



December 3, 2025

IGI Report Number LG749543430

ROUND BRILLIANT

LABORATORY GROWN DIAMOND

4.95 - 4.97 X 3.27 MM

Carat Weight 0.50 CARAT

Color Grade E

Clarity Grade VS 1

Cut Grade GOOD

Polish VERY GOOD

Symmetry EXCELLENT

Fluorescence NONE

Inscription(s) IGI LG749543430

Comments: This Laboratory Grown Diamond was created by Chemical Vapor Deposition (CVD) growth process. Type IIa



December 3, 2025

IGI Report Number LG749543430

ROUND BRILLIANT

LABORATORY GROWN DIAMOND

4.95 - 4.97 X 3.27 MM

Carat Weight 0.50 CARAT

Color Grade E

Clarity Grade VS 1

Cut Grade GOOD

Polish VERY GOOD

Symmetry EXCELLENT

Fluorescence NONE

Inscription(s) IGI LG749543430

Comments: This Laboratory Grown Diamond was created by Chemical Vapor Deposition (CVD) growth process. Type IIa



THIS DOCUMENT WAS PRODUCED WITH THE FOLLOWING SECURITY MEASURES: SPECIAL DOCUMENT PAPER, INK SCREENS, WATERMARK, BACKGROUND DESIGNS, HOLOGRAM AND OTHER SECURITY FEATURES NOT LISTED AND DO EXCEED DOCUMENT SECURITY INDUSTRY GUIDELINES.

For terms & conditions and to verify this report, please visit www.igi.org