



December 11, 2025

IGI Report Number **LG749544184**

ROUND BRILLIANT

LABORATORY GROWN DIAMOND

5.70 - 5.75 X 3.56 MM

Carat Weight	0.73 CARAT
Color Grade	E
Clarity Grade	VS 1
Cut Grade	VERY GOOD
Polish	VERY GOOD
Symmetry	VERY GOOD
Fluorescence	NONE
Inscription(s)	IGI LG749544184

Comments: This Laboratory Grown Diamond was created by Chemical Vapor Deposition (CVD) growth process. Type IIa

LABORATORY GROWN DIAMOND REPORT

December 11, 2025

IGI Report Number **LG749544184**

Description **LABORATORY GROWN DIAMOND**

Shape and Cutting Style **ROUND BRILLIANT**

Measurements **5.70 - 5.75 X 3.56 MM**

GRADING RESULTS

Carat Weight **0.73 CARAT**

Color Grade **E**

Clarity Grade **VS 1**

Cut Grade **VERY GOOD**

ADDITIONAL GRADING INFORMATION

Polish **VERY GOOD**

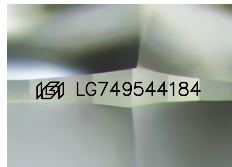
Symmetry **VERY GOOD**

Fluorescence **NONE**

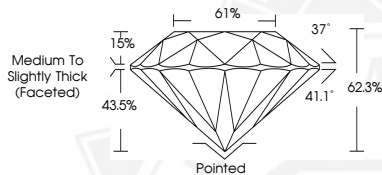
Inscription(s) **IGI LG749544184**

Comments: This Laboratory Grown Diamond was created by Chemical Vapor Deposition (CVD) growth process.

Type IIa



Sample Image Used



December 11, 2025

IGI Report Number **LG749544184**

ROUND BRILLIANT

LABORATORY GROWN DIAMOND

5.70 - 5.75 X 3.56 MM

Carat Weight	0.73 CARAT
Color Grade	E
Clarity Grade	VS 1
Cut Grade	VERY GOOD
Polish	VERY GOOD
Symmetry	VERY GOOD
Fluorescence	NONE
Inscription(s)	IGI LG749544184

Comments: This Laboratory Grown Diamond was created by Chemical Vapor Deposition (CVD) growth process. Type IIa



THIS DOCUMENT WAS PRODUCED WITH THE FOLLOWING SECURITY MEASURES: SPECIAL DOCUMENT PAPER, INK SCREENS, WATERMARK, BACKGROUND DESIGNS, HOLOGRAM AND OTHER SECURITY FEATURES NOT LISTED AND DO EXCEED DOCUMENT SECURITY INDUSTRY GUIDELINES.