



# INTERNATIONAL GEMOLOGICAL INSTITUTE

## LABORATORY GROWN DIAMOND REPORT

December 23, 2025

IGI Report Number

LG749544858

Description

LABORATORY GROWN DIAMOND

Shape and Cutting Style

CUT CORNERED RECTANGULAR MODIFIED  
BRILLIANT

Measurements

4.93 X 3.19 X 2.25 MM

### GRADING RESULTS

Carat Weight

0.29 CARAT

Color Grade

E

Clarity Grade

VVS 2

### ADDITIONAL GRADING INFORMATION

Polish

VERY GOOD

Symmetry

VERY GOOD

Fluorescence

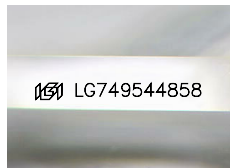
NONE

Inscription(s)

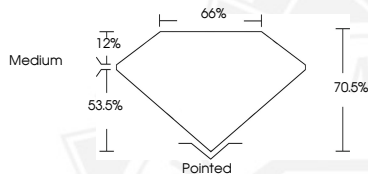
IGI LG749544858

Comments: This Laboratory Grown Diamond was created by  
Chemical Vapor Deposition (CVD) growth process.  
Type IIa

ELECTRONIC COPY



Sample Image Used



December 23, 2025

IGI Report Number LG749544858

CUT CORNERED RECTANGULAR  
MODIFIED BRILLIANT

LABORATORY GROWN DIAMOND

4.93 X 3.19 X 2.25 MM

Carat Weight 0.29 CARAT  
Color Grade E  
Clarity Grade VVS 2  
Polish VERY GOOD  
Symmetry VERY GOOD  
Fluorescence NONE  
Inscription(s) IGI LG749544858

Comments: This Laboratory Grown  
Diamond was created by  
Chemical Vapor Deposition (CVD)  
growth process. Type IIa



December 23, 2025

IGI Report Number LG749544858

CUT CORNERED RECTANGULAR  
MODIFIED BRILLIANT

LABORATORY GROWN DIAMOND

4.93 X 3.19 X 2.25 MM

Carat Weight 0.29 CARAT  
Color Grade E  
Clarity Grade VVS 2  
Polish VERY GOOD  
Symmetry VERY GOOD  
Fluorescence NONE  
Inscription(s) IGI LG749544858

Comments: This Laboratory Grown  
Diamond was created by  
Chemical Vapor Deposition (CVD)  
growth process. Type IIa



THIS DOCUMENT WAS PRODUCED WITH THE FOLLOWING SECURITY MEASURES: SPECIAL DOCUMENT PAPER, INK SCREENS, WATERMARK, BACKGROUND DESIGNS, HOLOGRAM AND OTHER SECURITY FEATURES NOT LISTED AND DO EXCEED DOCUMENT SECURITY INDUSTRY GUIDELINES.

For terms & conditions and to verify this report, please visit [www.igi.org](http://www.igi.org)