



ELECTRONIC COPY

LABORATORY GROWN DIAMOND REPORT

November 20, 2025  
IGI Report Number **LG749548149**  
Description **LABORATORY GROWN DIAMOND**  
Shape and Cutting Style **SQUARE CUSHION MODIFIED BRILLIANT**  
Measurements **12.74 X 12.27 X 8.24 MM**

GRADING RESULTS

Carat Weight **12.22 CARATS**  
Color Grade **E**  
Clarity Grade **VS 1**

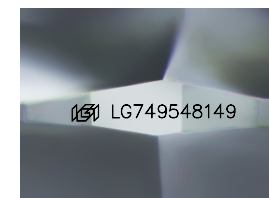
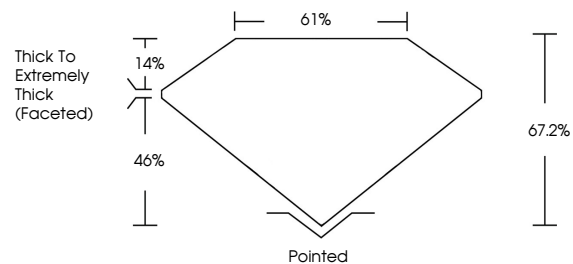
ADDITIONAL GRADING INFORMATION

Polish **EXCELLENT**  
Symmetry **EXCELLENT**  
Fluorescence **NONE**

Inscription(s) **IGI LG749548149**

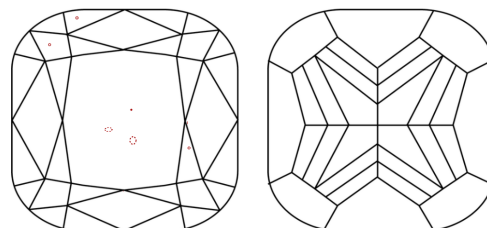
Comments: This Laboratory Grown Diamond was created by Chemical Vapor Deposition (CVD) growth process.  
Type IIa

PROPORTIONS



Sample Image Used

CLARITY CHARACTERISTICS



KEY TO SYMBOLS

Red symbols indicate internal characteristics.  
Green symbols indicate external characteristics.

COLOR

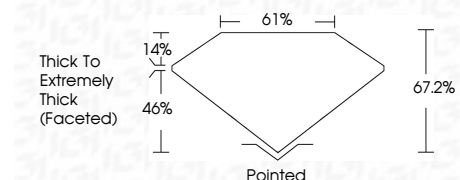
D E F G H I J Faint Very Light Light

CLARITY

FL IF VS<sup>1-2</sup> VS<sup>1-2</sup> SI<sup>1-2</sup> I<sup>1-3</sup>  
Flawless Internally Flawless Very Very Slightly Included Very Slightly Included Slightly Included Included



November 20, 2025  
IGI Report Number **LG749548149**  
Description **LABORATORY GROWN DIAMOND**  
Shape and Cutting Style **SQUARE CUSHION MODIFIED BRILLIANT**  
Measurements **12.74 X 12.27 X 8.24 MM**  
**GRADING RESULTS**  
Carat Weight **12.22 CARATS**  
Color Grade **E**  
Clarity Grade **VS 1**



ADDITIONAL GRADING INFORMATION

Polish **EXCELLENT**  
Symmetry **EXCELLENT**  
Fluorescence **NONE**  
Inscription(s) **IGI LG749548149**  
Comments: This Laboratory Grown Diamond was created by Chemical Vapor Deposition (CVD) growth process.  
Type IIa



November 20, 2025  
IGI Report No **LG749548149**  
**SQUARE CUSHION MODIFIED BRILLIANT**  
12.74 X 12.27 X 8.24 MM  
Carat Weight **12.22 CARATS**  
Color Grade **E**  
Clarity Grade **VS 1**  
Depth **67.2%**  
Table **61%**  
Girdle **Thick To Extremely Thick (Faceted)**  
Culet **Pointed**  
Polish **EXCELLENT**  
Symmetry **EXCELLENT**  
Fluorescence **NONE**  
Inscription(s) **IGI LG749548149**  
Comments: This Laboratory Grown Diamond was created by Chemical Vapor Deposition (CVD) growth process.  
Type IIa