



ELECTRONIC COPY

LG749548999
Report verification at igi.org



November 14, 2025

IGI Report Number **LG749548999**

Description **LABORATORY GROWN DIAMOND**

Shape and Cutting Style **PRINCESS CUT**

Measurements **9.18 X 9.12 X 6.64 MM**

GRADING RESULTS

Carat Weight **4.82 CARATS**

Color Grade **E**

Clarity Grade **VVS 2**

LABORATORY GROWN DIAMOND REPORT

November 14, 2025

IGI Report Number **LG749548999**

Description **LABORATORY GROWN DIAMOND**

Shape and Cutting Style **PRINCESS CUT**

Measurements **9.18 X 9.12 X 6.64 MM**

GRADING RESULTS

Carat Weight **4.82 CARATS**

Color Grade **E**

Clarity Grade **VVS 2**

ADDITIONAL GRADING INFORMATION

Polish **EXCELLENT**

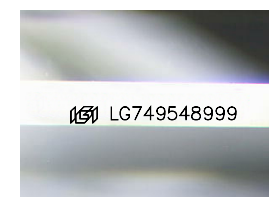
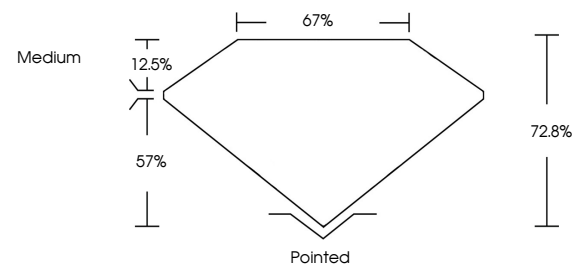
Symmetry **EXCELLENT**

Fluorescence **NONE**

Inscription(s) **IGI LG749548999**

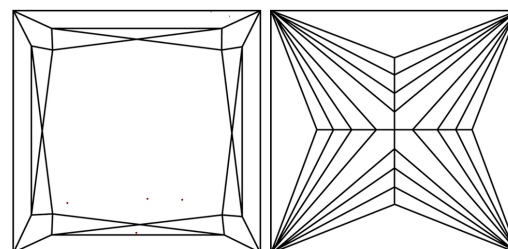
Comments: This Laboratory Grown Diamond was created by Chemical Vapor Deposition (CVD) growth process.
Type IIa

PROPORTIONS



Sample Image Used

CLARITY CHARACTERISTICS



KEY TO SYMBOLS

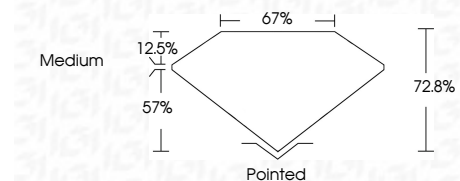
Red symbols indicate internal characteristics.
Green symbols indicate external characteristics.

COLOR

D E F G H I J Faint Very Light Light

CLARITY

FL	IF	VVS ¹⁻²	VS ¹⁻²	SI ¹⁻²	I ¹⁻³
Flawless	Internally Flawless	Very Very Slightly Included	Very Slightly Included	Slightly Included	Included



ADDITIONAL GRADING INFORMATION

Polish **EXCELLENT**

Symmetry **EXCELLENT**

Fluorescence **NONE**

Inscription(s) **IGI LG749548999**

Comments: This Laboratory Grown Diamond was created by Chemical Vapor Deposition (CVD) growth process.
Type IIa



November 14, 2025
IGI Report No LG749548999
PRINCESS CUT

4.82 CARATS
E

9.18 X 9.12 X 6.64 MM

Carat Weight
Color Grade
Clarity Grade
Depth
Table
Girdle
Medium

Pointed
EXCELLENT
EXCELLENT
NONE
IGI LG749548999

Culet
Polish
Symmetry
Fluorescence
Inscription(s)

Comments: This Laboratory Grown Diamond was created by Chemical Vapor Deposition (CVD) growth process.
Type IIa