



ELECTRONIC COPY

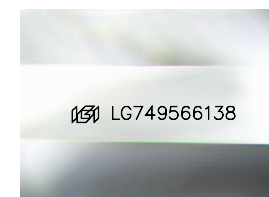
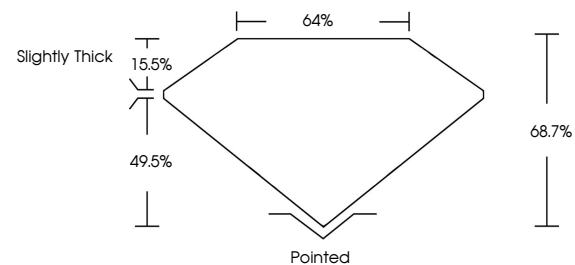
LG749566138
Report verification at igi.org



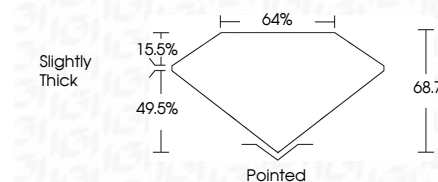
November 21, 2025
IGI Report Number **LG749566138**
Description **LABORATORY GROWN DIAMOND**
Shape and Cutting Style **CUT CORNERED
RECTANGULAR MODIFIED
BRILLIANT**
Measurements **8.68 X 6.23 X 4.28 MM**
GRADING RESULTS
Carat Weight **2.05 CARATS**
Color Grade **FANCY VIVID PINK**
Clarity Grade **VVS 2**

November 21, 2025
IGI Report Number **LG749566138**
Description **LABORATORY GROWN DIAMOND**
Shape and Cutting Style **CUT CORNERED RECTANGULAR
MODIFIED BRILLIANT**
Measurements **8.68 X 6.23 X 4.28 MM**
GRADING RESULTS
Carat Weight **2.05 CARATS**
Color Grade **FANCY VIVID PINK**
Clarity Grade **VVS 2**

PROPORTIONS



Sample Image Used



ADDITIONAL GRADING INFORMATION

Polish **EXCELLENT**
Symmetry **VERY GOOD**
Fluorescence **STRONG**
Inscription(s) **IGI LG749566138**

Comments: This Laboratory Grown Diamond was created by Chemical Vapor Deposition (CVD) growth process.
Indications of post-growth treatment.

COLOR

D E F G H I J Faint Very Light Light

CLARITY

FL	IF	VVS ¹⁻²	VS ¹⁻²	SI ¹⁻²	I ¹⁻³
Flawless	Internally Flawless	Very Very Slightly Included	Very Slightly Included	Slightly Included	Included

ADDITIONAL GRADING INFORMATION

Polish **EXCELLENT**
Symmetry **VERY GOOD**
Fluorescence **STRONG**
Inscription(s) **IGI LG749566138**
Comments: This Laboratory Grown Diamond was created by Chemical Vapor Deposition (CVD) growth process.
Indications of post-growth treatment.



IGI



November 21, 2025
IGI Report No **LG749566138**
CUT CORNERED RECT. MODIFIED BRILLIANT
8.68 X 6.23 X 4.28 MM
Carat Weight **2.05 CARATS**
Color Grade **FANCY VIVID PINK**
Clarity Grade **VVS 2**
Depth **68.7%**
Table **64%**
Girdle **Slightly Thick**
Culet **Pointed**
Polish **EXCELLENT**
Symmetry **VERY GOOD**
Fluorescence **STRONG**
Inscription(s) **IGI LG749566138**
Comments: This Laboratory Grown Diamond was created by Chemical Vapor Deposition (CVD) growth process.
Indications of post-growth treatment.