



**ELECTRONIC COPY**

## LABORATORY GROWN DIAMOND REPORT

|                         |                          |
|-------------------------|--------------------------|
| November 17, 2025       |                          |
| IGI Report Number       | LG749583455              |
| Description             | LABORATORY GROWN DIAMOND |
| Shape and Cutting Style | EMERALD CUT              |
| Measurements            | 9.42 X 6.12 X 4.40 MM    |

## GRADING RESULTS

|               |             |
|---------------|-------------|
| Carat Weight  | 2.51 CARATS |
| Color Grade   | D           |
| Clarity Grade | VS 1        |

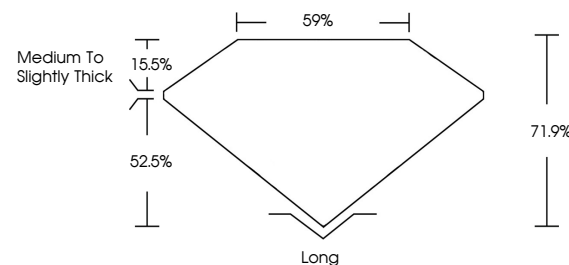
### ADDITIONAL GRADING INFORMATION

|                |                 |
|----------------|-----------------|
| Polish         | EXCELLENT       |
| Symmetry       | EXCELLENT       |
| Fluorescence   | NONE            |
| Inscription(s) | 151 LG749583455 |

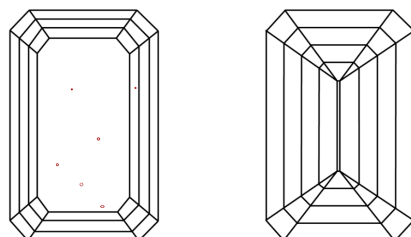
Comments: This Laboratory Grown Diamond was created by Chemical Vapor Deposition (CVD) growth process.  
Type IIa

LG749583455  
Report verification at [igi.org](https://igi.org)

## PROPORTIONS

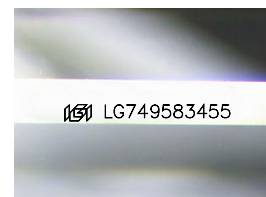


## CLARITY CHARACTERISTICS



## KEY TO SYMBOLS

Red symbols indicate internal characteristics.  
Green symbols indicate external characteristics.



Sample Image Used

## COLOR

D E F G H I J Faint Very Light Light

## CLARITY

| FL       | IF                  | VVS <sup>1-2</sup>          | VS <sup>1-2</sup>      | SI <sup>1-2</sup> | I <sup>1-3</sup> |
|----------|---------------------|-----------------------------|------------------------|-------------------|------------------|
| Flawless | Internally Flawless | Very Very Slightly Included | Very Slightly Included | Slightly Included | Included         |

## LABORATORY GROWN DIAMOND REPORT



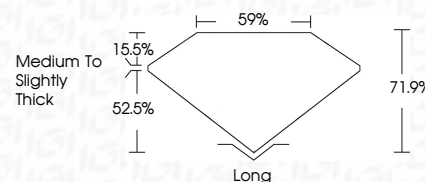
|                         |                          |
|-------------------------|--------------------------|
| November 17, 2025       |                          |
| IGI Report Number       | LG749583455              |
| Description             | LABORATORY GROWN DIAMOND |
| Shape and Cutting Style | EMERALD CUT              |
| Measurements            | 9.42 X 6.12 X 4.40 MM    |

## GRADING RESULTS

|               |             |
|---------------|-------------|
| Carat Weight  | 2.51 CARATS |
| Color Grade   | D           |
| Clarity Grade | VS 1        |

### ADDITIONAL GRADING INFORMATION

|   |   |
|---|---|
| Polish  | EXCELLENT   |
| Symmetry  | EXCELLENT   |
| Fluorescence  | NONE  |
| Inscription(s)  |  LG749583455 |
| <p>Comments: This Laboratory Grown Diamond was created by Chemical Vapor Deposition (CVD) growth process.</p> <p>Type IIa</p> |   |



© IGI 2020, International Gemological Institute

FD - 10 20



THIS DOCUMENT WAS PRODUCED WITH THE FOLLOWING SECURITY MEASURES: SPECIAL DOCUMENT PAPER, INK SCREENS, WATERMARK, BACKGROUND DESIGNS, HOLOGRAM AND OTHER SECURITY FEATURES NOT LISTED AND DO EXCEED DOCUMENT SECURITY INDUSTRY GUIDELINES

**www.igi.org**



November 17, 2025  
GI Report No LG749583455

|                       |             |               |       |                          |        |           |           |          |                            |
|-----------------------|-------------|---------------|-------|--------------------------|--------|-----------|-----------|----------|----------------------------|
| 2.42 X 6.12 X 4.40 MM | 2.51 CARATS | VS 1          | 59%   | Medium To Slightly Thick | Long   | EXCELLENT | EXCELLENT | NONE     | 4mm / 1.27 / 0.050 / 0.052 |
| Carat Weight          |             | Clarity Grade | Depth | Table                    | Girdle | Culet     | Polish    | Symmetry | Fluorescence               |
| Color Grade           |             |               |       |                          |        |           |           |          |                            |

**Comments:**  
This Laboratory Grown Diamond was created by Chemical Vapor Deposition (CVD) growth process.