



INTERNATIONAL GEMOLOGICAL INSTITUTE

ELECTRONIC COPY

LABORATORY GROWN DIAMOND REPORT

November 26, 2025

IGI Report Number

LG750507600

Description

LABORATORY GROWN DIAMOND

Shape and Cutting Style

OVAL BRILLIANT

Measurements

6.60 X 4.57 X 2.85 MM

GRADING RESULTS

Carat Weight

0.53 CARAT

Color Grade

H

Clarity Grade

VS 1

ADDITIONAL GRADING INFORMATION

Polish

GOOD

Symmetry

VERY GOOD

Fluorescence

NONE

Inscription(s)

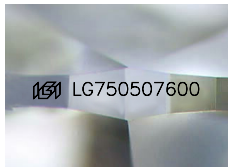
IGI LG750507600

Comments: As Grown - No indication of post-growth treatment.

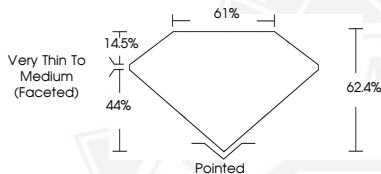
This Laboratory Grown Diamond was created by High Pressure High Temperature (HPHT) growth process.

Type II

Faint Blue



Sample Image Used



November 26, 2025

IGI Report Number LG750507600

OVAL BRILLIANT

LABORATORY GROWN DIAMOND

6.60 X 4.57 X 2.85 MM

Carat Weight 0.53 CARAT

Color Grade H

Clarity Grade VS 1

Polish GOOD

Symmetry VERY GOOD

Fluorescence NONE

Inscription(s) IGI LG750507600

Comments: As Grown - No

Indication of post-growth

treatment. This Laboratory Grown

Diamond was created by High

Pressure High Temperature (HPHT)

growth process. Type II Faint Blue



November 26, 2025

IGI Report Number LG750507600

OVAL BRILLIANT

LABORATORY GROWN DIAMOND

6.60 X 4.57 X 2.85 MM

Carat Weight 0.53 CARAT

Color Grade H

Clarity Grade VS 1

Polish GOOD

Symmetry VERY GOOD

Fluorescence NONE

Inscription(s) IGI LG750507600

Comments: As Grown - No

Indication of post-growth

treatment. This Laboratory Grown

Diamond was created by High

Pressure High Temperature (HPHT)

growth process. Type II Faint Blue



THIS DOCUMENT WAS PRODUCED WITH THE FOLLOWING SECURITY MEASURES: SPECIAL DOCUMENT PAPER, INK SCREENS, WATERMARK, BACKGROUND DESIGNS, HOLOGRAM AND OTHER SECURITY FEATURES NOT LISTED AND DO EXCEED DOCUMENT SECURITY INDUSTRY GUIDELINES.

For terms & conditions and to verify this report, please visit www.igi.org