



**LABORATORY GROWN DIAMOND REPORT**

December 5, 2025  
 IGI Report Number **LG750507947**  
 Description **LABORATORY GROWN DIAMOND**  
 Shape and Cutting Style **OVAL BRILLIANT**  
 Measurements **6.02 X 4.56 X 2.81 MM**

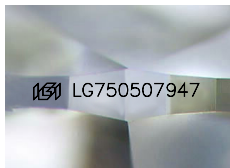
**GRADING RESULTS**

Carat Weight **0.51 CARAT**  
 Color Grade **E**  
 Clarity Grade **VS 2**

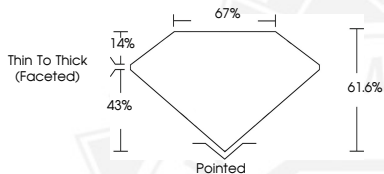
**ADDITIONAL GRADING INFORMATION**

Polish **VERY GOOD**  
 Symmetry **VERY GOOD**  
 Fluorescence **NONE**  
 Inscription(s) **IGI LG750507947**

Comments: As Grown - No indication of post-growth treatment. This Laboratory Grown Diamond was created by High Pressure High Temperature (HPHT) growth process. Type II



Sample Image Used



December 5, 2025  
 IGI Report Number **LG750507947**  
**OVAL BRILLIANT**  
**LABORATORY GROWN DIAMOND**  
**6.02 X 4.56 X 2.81 MM**  
 Carat Weight **0.51 CARAT**  
 Color Grade **E**  
 Clarity Grade **VS 2**  
 Polish **VERY GOOD**  
 Symmetry **VERY GOOD**  
 Fluorescence **NONE**  
 Inscription(s) **IGI LG750507947**

Comments: As Grown - No indication of post-growth treatment. This Laboratory Grown Diamond was created by High Pressure High Temperature (HPHT) growth process. Type II



December 5, 2025  
 IGI Report Number **LG750507947**  
**OVAL BRILLIANT**  
**LABORATORY GROWN DIAMOND**  
**6.02 X 4.56 X 2.81 MM**  
 Carat Weight **0.51 CARAT**  
 Color Grade **E**  
 Clarity Grade **VS 2**  
 Polish **VERY GOOD**  
 Symmetry **VERY GOOD**  
 Fluorescence **NONE**  
 Inscription(s) **IGI LG750507947**

Comments: As Grown - No indication of post-growth treatment. This Laboratory Grown Diamond was created by High Pressure High Temperature (HPHT) growth process. Type II



THIS DOCUMENT WAS PRODUCED WITH THE FOLLOWING SECURITY MEASURES: SPECIAL DOCUMENT PAPER, INK SCREENS, WATERMARK, BACKGROUND DESIGNS, HOLOGRAM AND OTHER SECURITY FEATURES NOT LISTED AND DO EXCEED DOCUMENT SECURITY INDUSTRY GUIDELINES.