



November 19, 2025

IGI Report Number **LG750509679**

**PRINCESS CUT  
LABORATORY GROWN DIAMOND  
3.71 X 3.57 X 2.63 MM**

Carat Weight	<b>0.31 CARAT</b>
Color Grade	<b>E</b>
Clarity Grade	<b>VVS 1</b>
Polish	<b>EXCELLENT</b>
Symmetry	<b>VERY GOOD</b>
Fluorescence	<b>NONE</b>
Inscription(s)	<b>IGI LG750509679</b>

Comments: This Laboratory Grown Diamond was created by Chemical Vapor Deposition (CVD) growth process. Type IIa

**LABORATORY GROWN DIAMOND REPORT**

November 19, 2025  
IGI Report Number **LG750509679**  
Description **LABORATORY GROWN DIAMOND**  
Shape and Cutting Style **PRINCESS CUT**  
Measurements **3.71 X 3.57 X 2.63 MM**

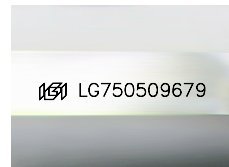
**GRADING RESULTS**

Carat Weight **0.31 CARAT**  
Color Grade **E**  
Clarity Grade **VVS 1**

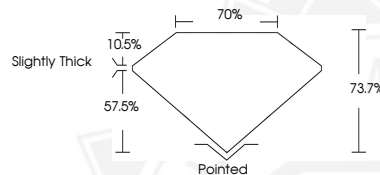
**ADDITIONAL GRADING INFORMATION**

Polish **EXCELLENT**  
Symmetry **VERY GOOD**  
Fluorescence **NONE**  
Inscription(s) **IGI LG750509679**

Comments: This Laboratory Grown Diamond was created by Chemical Vapor Deposition (CVD) growth process. Type IIa



Sample Image Used



November 19, 2025

IGI Report Number **LG750509679**

**PRINCESS CUT  
LABORATORY GROWN DIAMOND  
3.71 X 3.57 X 2.63 MM**

Carat Weight	<b>0.31 CARAT</b>
Color Grade	<b>E</b>
Clarity Grade	<b>VVS 1</b>
Polish	<b>EXCELLENT</b>
Symmetry	<b>VERY GOOD</b>
Fluorescence	<b>NONE</b>
Inscription(s)	<b>IGI LG750509679</b>

Comments: This Laboratory Grown Diamond was created by Chemical Vapor Deposition (CVD) growth process. Type IIa



THIS DOCUMENT WAS PRODUCED WITH THE FOLLOWING SECURITY MEASURES: SPECIAL DOCUMENT PAPER, INK SCREENS, WATERMARK, BACKGROUND DESIGNS, HOLOGRAM AND OTHER SECURITY FEATURES NOT LISTED AND DO EXCEED DOCUMENT SECURITY INDUSTRY GUIDELINES.