



ELECTRONIC COPY

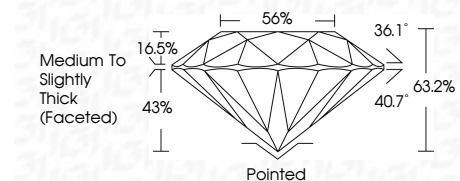
LG750509751
Report verification at igi.org



November 20, 2025
IGI Report Number LG750509751
Description LABORATORY GROWN DIAMOND
Shape and Cutting Style ROUND BRILLIANT
Measurements 9.19 - 9.24 X 5.82 MM

GRADING RESULTS

Carat Weight 3.08 CARATS
Color Grade E
Clarity Grade VVS 2
Cut Grade EXCELLENT

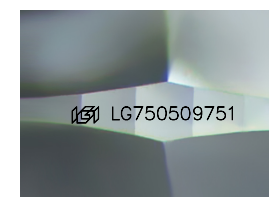


ADDITIONAL GRADING INFORMATION

Polish EXCELLENT
Symmetry EXCELLENT
Fluorescence NONE
Inscription(s) IGI LG750509751
Comments: This Laboratory Grown Diamond was created by Chemical Vapor Deposition (CVD) growth process. Type IIa

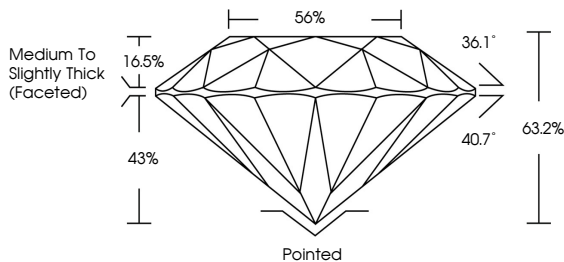


November 20, 2025
IGI Report No LG750509751
ROUND BRILLIANT
3.08 CARATS E
Color Grade EXCELLENT
Clarity Grade VVS 2
Depth 63.2%
Table 56%
Girdle Medium To Slightly Thick (Faceted)
Cutler Pointed
Polish EXCELLENT
Symmetry EXCELLENT
Fluorescence NONE
Inscription(s) IGI LG750509751
Comments: This Laboratory Grown Diamond was created by Chemical Vapor Deposition (CVD) growth process. Type IIa

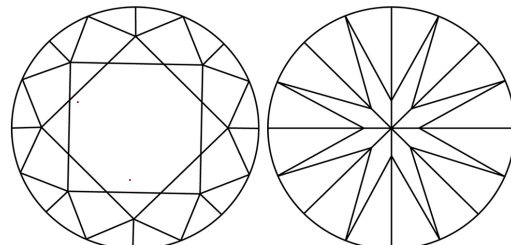


Sample Image Used

PROPORTIONS



CLARITY CHARACTERISTICS



KEY TO SYMBOLS

Red symbols indicate internal characteristics.
Green symbols indicate external characteristics.

COLOR

Table with color scale: D, E, F, G, H, I, J, Faint, Very Light, Light

CLARITY

Table with clarity scale: FL, IF, VVS 1-2, VS 1-2, SI 1-2, I 1-3, Flawless, Internally Flawless, Very Very Slightly Included, Very Slightly Included, Slightly Included, Included

