



**ELECTRONIC COPY**

LG750509829  
Report verification at igi.org

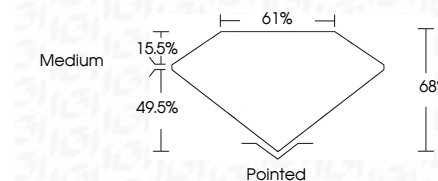


November 20, 2025  
IGI Report Number **LG750509829**  
Description **LABORATORY GROWN DIAMOND**  
Shape and Cutting Style **CUT CORNERED  
RECTANGULAR MODIFIED  
BRILLIANT**

Measurements **10.05 X 6.94 X 4.72 MM**

**GRADING RESULTS**

Carat Weight **2.89 CARATS**  
Color Grade **E**  
Clarity Grade **VS 2**

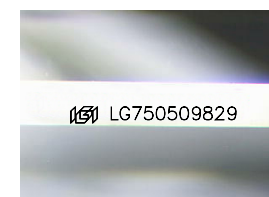


**ADDITIONAL GRADING INFORMATION**

Polish **EXCELLENT**  
Symmetry **EXCELLENT**  
Fluorescence **NONE**  
Inscription(s) **(IGI) LG750509829**  
Comments: This Laboratory Grown Diamond was created by Chemical Vapor Deposition (CVD) growth process. Type IIa

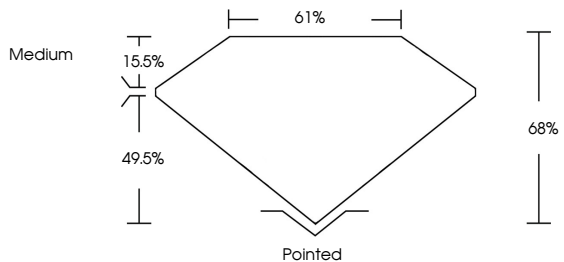


November 20, 2025  
IGI Report No LG750509829  
CUT CORNERED RECT. MODIFIED BRILLIANT  
10.05 X 6.94 X 4.72 MM  
2.89 CARATS  
E  
VS 2  
68%  
61%  
Medium  
Pointed  
EXCELLENT  
EXCELLENT  
NONE  
Inscription(s)  
(IGI) LG750509829  
Comments: This Laboratory Grown Diamond was created by Chemical Vapor Deposition (CVD) growth process. Type IIa

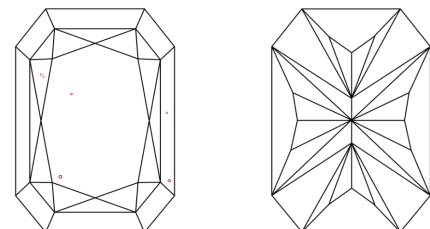


Sample Image Used

**PROPORTIONS**



**CLARITY CHARACTERISTICS**



**KEY TO SYMBOLS**

Red symbols indicate internal characteristics.  
Green symbols indicate external characteristics.

**COLOR**

D	E	F	G	H	I	J	Faint	Very Light	Light
---	---	---	---	---	---	---	-------	------------	-------

**CLARITY**

FL	IF	VS <sup>1-2</sup>	VS <sup>1-2</sup>	SI <sup>1-2</sup>	I <sup>1-3</sup>
Flawless	Internally Flawless	Very Very Slightly Included	Very Slightly Included	Slightly Included	Included

