



**ELECTRONIC COPY**

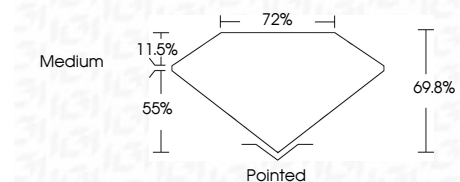
LG750528930  
Report verification at igi.org



November 25, 2025  
IGI Report Number **LG750528930**  
Description **LABORATORY GROWN DIAMOND**  
Shape and Cutting Style **PRINCESS CUT**  
Measurements **8.73 X 8.72 X 6.09 MM**

**GRADING RESULTS**

Carat Weight **4.02 CARATS**  
Color Grade **H**  
Clarity Grade **VVS 2**



**ADDITIONAL GRADING INFORMATION**

Polish **EXCELLENT**  
Symmetry **EXCELLENT**  
Fluorescence **NONE**  
Inscription(s) **IGI LG750528930**  
Comments: This Laboratory Grown Diamond was created by Chemical Vapor Deposition (CVD) growth process. Type IIa



November 25, 2025  
IGI Report No LG750528930  
**PRINCESS CUT**  
8.73 X 8.72 X 6.09 MM  
4.02 CARATS  
H  
VVS 2  
69.8%  
72%  
Medium  
Pointed  
EXCELLENT  
EXCELLENT  
NONE  
IGI LG750528930  
Comments: This Laboratory Grown Diamond was created by Chemical Vapor Deposition (CVD) growth process. Type IIa

**LABORATORY GROWN DIAMOND REPORT**

November 25, 2025  
IGI Report Number **LG750528930**  
Description **LABORATORY GROWN DIAMOND**  
Shape and Cutting Style **PRINCESS CUT**  
Measurements **8.73 X 8.72 X 6.09 MM**

**GRADING RESULTS**

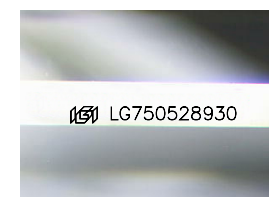
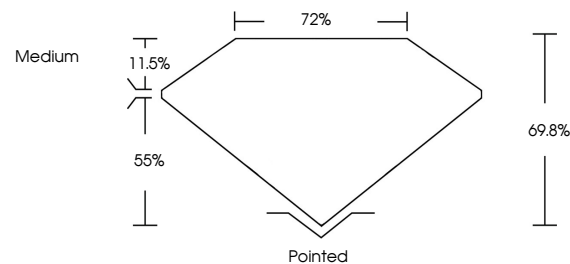
Carat Weight **4.02 CARATS**  
Color Grade **H**  
Clarity Grade **VVS 2**

**ADDITIONAL GRADING INFORMATION**

Polish **EXCELLENT**  
Symmetry **EXCELLENT**  
Fluorescence **NONE**  
Inscription(s) **IGI LG750528930**

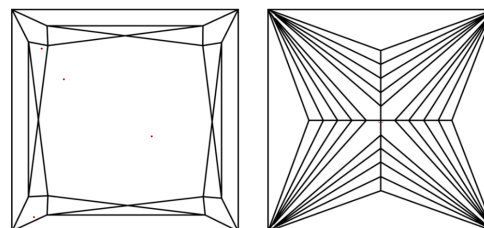
Comments: This Laboratory Grown Diamond was created by Chemical Vapor Deposition (CVD) growth process. Type IIa

**PROPORTIONS**



Sample Image Used

**CLARITY CHARACTERISTICS**



**KEY TO SYMBOLS**

Red symbols indicate internal characteristics.  
Green symbols indicate external characteristics.

**COLOR**

D E F G H I J Faint Very Light Light

**CLARITY**

FL	IF	VVS <sup>1-2</sup>	VS <sup>1-2</sup>	SI <sup>1-2</sup>	I <sup>1-3</sup>
Flawless	Internally Flawless	Very Very Slightly Included	Very Slightly Included	Slightly Included	Included

