



**ELECTRONIC COPY**

## LABORATORY GROWN DIAMOND REPORT

November 22, 2025	
IGI Report Number	LG750535967
Description	LABORATORY GROWN DIAMOND
Shape and Cutting Style	CUT CORNERED RECTANGULAR MODIFIED BRILLIANT
Measurements	11.35 X 7.79 X 5.33 MM

## GRADING RESULTS

Carat Weight	4.08 CARATS
Color Grade	G
Clarity Grade	VS 1

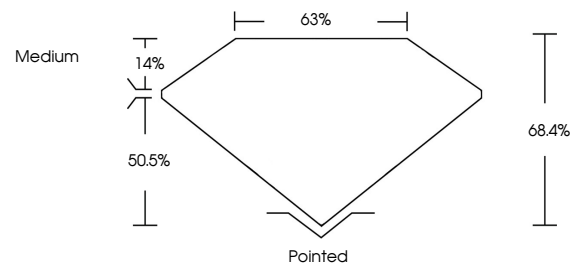
### ADDITIONAL GRADING INFORMATION

Polish	EXCELLENT
Symmetry	EXCELLENT
Fluorescence	NONE
Inscription(s)	 LG750535967

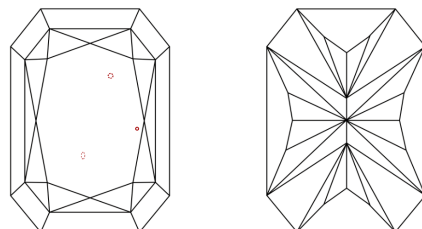
Comments: This Laboratory Grown Diamond was created by Chemical Vapor Deposition (CVD) growth process.  
Type IIa

LG750535967  
Report verification at [igi.org](https://igi.org)

## PROPORTIONS

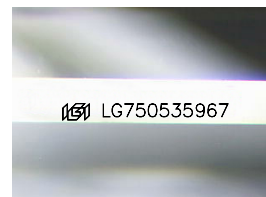


## CLARITY CHARACTERISTICS



## KEY TO SYMBOLS

Red symbols indicate internal characteristics.  
Green symbols indicate external characteristics.



Sample Image Used

**COLOR**

D E F G H I J Faint Very Light Light

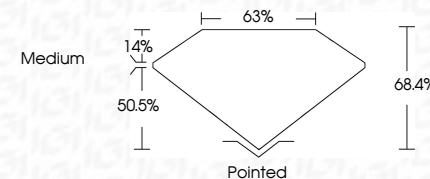
## CLARITY

FL	IF	VVS <sup>1-2</sup>	VS <sup>1-2</sup>	SI <sup>1-2</sup>	I <sup>1-3</sup>
Flawless	Internally Flawless	Very Very Slightly Included	Very Slightly Included	Slightly Included	Included

## LABORATORY GROWN DIAMOND REPORT



November 22, 2025	
IGI Report Number	LG750535967
Description	LABORATORY GROWN DIAMOND
Shape and Cutting Style	CUT CORNERED RECTANGULAR MODIFIED BRILLIANT
Measurements	11.35 X 7.79 X 5.33 MM
<b>GRADING RESULTS</b>	
Carat Weight	4.08 CARATS
Color Grade	G
Clarity Grade	VS 1



### ADDITIONAL GRADING INFORMATION

Polish	EXCELLENT
Symmetry	EXCELLENT
Fluorescence	NONE
Inscription(s)	<del>(G)</del> LG750535967
Comments: This Laboratory Grown Diamond was created by Chemical Vapor Deposition (CVD) growth process.	
Type IIa	



© IGI 2020, International Gemological Institute

FD - 10 20

**www.igi.org**

THIS DOCUMENT WAS PRODUCED WITH THE FOLLOWING SECURITY MEASURES: SPECIAL DOCUMENT PAPER, INK SCREENS, WATERMARK, BACKGROUND DESIGNS, HOLOGRAM AND OTHER SECURITY FEATURES NOT LISTED AND DO EXCEED DOCUMENT SECURITY INDUSTRY GUIDELINES

November 22, 2025	GI Report No LG75035967	4.08 CARATS	G	Vs1	64.4%	65%	Medium	Pointed EXCELLENT EXCELLENT NONE	681 LG75035967	Comments: This Fancy Grown Diamond was created by Chemical Vapor Deposition (CVD) growth process. Type IIa
	GI CORNERED RECT. MODIFIED BRILLIANT	1.35 X 7.79 X 6.33 MM	Color Grade	Clarity Grade	Depth	Table	Girdle	Fluorescence Symmetry Inscriptions(s)		