



**ELECTRONIC COPY**

LG750538826  
Report verification at igi.org



November 20, 2025  
IGI Report Number **LG750538826**  
Description **LABORATORY GROWN DIAMOND**  
Shape and Cutting Style **CUSHION BRILLIANT**  
Measurements **12.18 X 8.67 X 5.92 MM**  
**GRADING RESULTS**  
Carat Weight **5.01 CARATS**  
Color Grade **E**  
Clarity Grade **VS 2**

**LABORATORY GROWN DIAMOND REPORT**

November 20, 2025  
IGI Report Number **LG750538826**  
Description **LABORATORY GROWN DIAMOND**  
Shape and Cutting Style **CUSHION BRILLIANT**  
Measurements **12.18 X 8.67 X 5.92 MM**

**GRADING RESULTS**

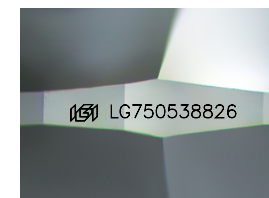
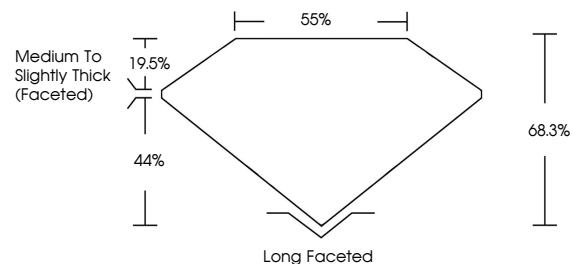
Carat Weight **5.01 CARATS**  
Color Grade **E**  
Clarity Grade **VS 2**

**ADDITIONAL GRADING INFORMATION**

Polish **EXCELLENT**  
Symmetry **EXCELLENT**  
Fluorescence **NONE**  
Inscription(s) **LG750538826**

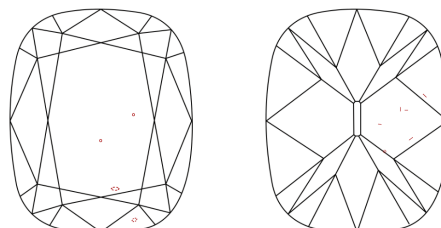
Comments: This Laboratory Grown Diamond was created by Chemical Vapor Deposition (CVD) growth process.  
Type IIa

**PROPORTIONS**



Sample Image Used

**CLARITY CHARACTERISTICS**



**KEY TO SYMBOLS**

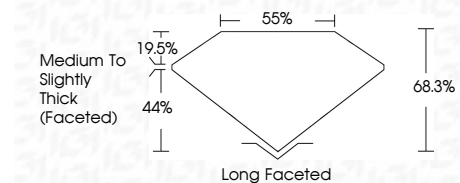
Red symbols indicate internal characteristics.  
Green symbols indicate external characteristics.

**COLOR**

D E F G H I J Faint Very Light Light

**CLARITY**

FL	IF	VS <sup>1-2</sup>	VS <sup>1-2</sup>	SI <sup>1-2</sup>	I <sup>1-3</sup>
Flawless	Internally Flawless	Very Very Slightly Included	Very Slightly Included	Slightly Included	Included



**ADDITIONAL GRADING INFORMATION**

Polish **EXCELLENT**  
Symmetry **EXCELLENT**  
Fluorescence **NONE**  
Inscription(s) **LG750538826**  
Comments: This Laboratory Grown Diamond was created by Chemical Vapor Deposition (CVD) growth process.  
Type IIa



November 20, 2025  
IGI Report No LG750538826  
**CUSHION BRILLIANT**  
12.18 X 8.67 X 5.92 MM  
5.01 CARATS  
E  
VS 2  
68.3%  
44%  
Medium to Slightly Thick (Faceted)  
Long Faceted  
EXCELLENT  
EXCELLENT  
NONE  
None  
 LG750538826  
Comments: This Laboratory Grown Diamond was created by Chemical Vapor Deposition (CVD) growth process.  
Type IIa