



**ELECTRONIC COPY**

## LABORATORY GROWN DIAMOND REPORT

November 22, 2025	
IGI Report Number	LG750552839
Description	LABORATORY GROWN DIAMOND
Shape and Cutting Style	CUT CORNERED RECTANGULAR MODIFIED BRILLIANT
Measurements	10.09 X 6.92 X 4.71 MM

## GRADING RESULTS

Carat Weight	2.90 CARATS
Color Grade	F
Clarity Grade	SI 1

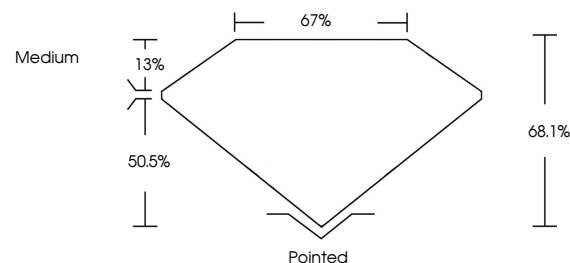
### ADDITIONAL GRADING INFORMATION

Polish	EXCELLENT
Symmetry	EXCELLENT
Fluorescence	NONE
Inscription(s)	 LG750552839

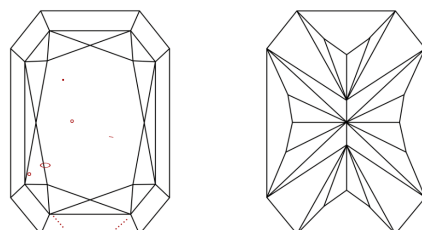
Comments: This Laboratory Grown Diamond was created by Chemical Vapor Deposition (CVD) growth process.  
Type IIa

LG750552839  
Report verification at [igi.org](https://igi.org)

## PROPORTIONS

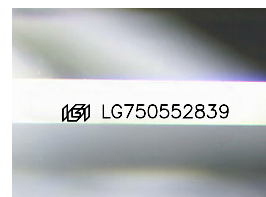


## CLARITY CHARACTERISTICS



## KEY TO SYMBOLS

Red symbols indicate internal characteristics.  
Green symbols indicate external characteristics.



Sample Image Used

COLOR

D E F G H I J Faint Very Light Light

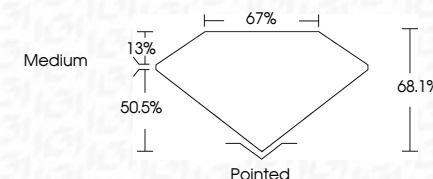
## CLARITY

FL	IF	VVS <sup>1-2</sup>	VS <sup>1-2</sup>	SI <sup>1-2</sup>	I <sup>1-3</sup>
Flawless	Internally Flawless	Very Very Slightly Included	Very Slightly Included	Slightly Included	Included

## LABORATORY GROWN DIAMOND REPORT



November 22, 2025	
IGI Report Number	LG750552839
Description	LABORATORY GROWN DIAMOND
Shape and Cutting Style	CUT CORNERED RECTANGULAR MODIFIED BRILLIANT
Measurements	10.09 X 6.92 X 4.71 MM
<b>GRADING RESULTS</b>	
Carat Weight	2.90 CARATS
Color Grade	F
Clarity Grade	SI 1



### ADDITIONAL GRADING INFORMATION

Polish	EXCELLENT
Symmetry	EXCELLENT
Fluorescence	NONE
Inscription(s)	 LG750552839
<p>Comments: This Laboratory Grown Diamond was created by Chemical Vapor Deposition (CVD) growth process.</p> <p>Type IIa</p>	



© IGI 2020, International Gemological Institute

FD - 10 20

**www.igi.org**

THIS DOCUMENT WAS PRODUCED WITH THE FOLLOWING SECURITY MEASURES: SPECIAL DOCUMENT PAPER, INK SCREENS, WATERMARK, BACKGROUND DESIGNS, HOLOGRAM AND OTHER SECURITY FEATURES NOT LISTED AND DO EXCEED DOCUMENT SECURITY INDUSTRY GUIDELINES

November 22, 2025	GI Report No LG75052839	CUT CORNERED RECT. MODIFIED BRILLIANT	
10.09 X 6.92 X 4.71 MM	2.90 CARATS	F	
Carat Weight	SI 1		
Color Grade	68.1%		
Clarity Grade	67%		
Depth	Medium		
Table	Pointed		
Girdle	EXCELLENT		
Culet	EXCELLENT		
Polish	NONE		
Symmetry	681 LG75052839		
Fluorescence			
Inscription(s)			

Comments:  
 This Laboratory Grown Diamond was  
 created by Chemical Vapor Deposition  
 growth process.  
 Type IId