



November 25, 2025

IGI Report Number LG750554287
CUSHION MODIFIED BRILLIANT
LABORATORY GROWN DIAMOND
6.39 X 4.70 X 3.16 MM

Carat Weight **0.71 CARAT**
Color Grade **F**
Clarity Grade **VS 2**
Polish **EXCELLENT**
Symmetry **EXCELLENT**
Fluorescence **NONE**
Inscription(s) **IGI LG750554287**

Comments: This Laboratory Grown Diamond was created by Chemical Vapor Deposition (CVD) growth process. Type IIa

LABORATORY GROWN DIAMOND REPORT

November 25, 2025
IGI Report Number **LG750554287**
Description **LABORATORY GROWN DIAMOND**
Shape and Cutting Style **CUSHION MODIFIED BRILLIANT**
Measurements **6.39 X 4.70 X 3.16 MM**

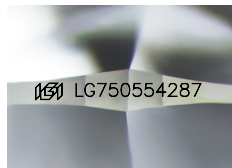
GRADING RESULTS

Carat Weight **0.71 CARAT**
Color Grade **F**
Clarity Grade **VS 2**

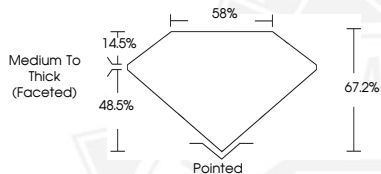
ADDITIONAL GRADING INFORMATION

Polish **EXCELLENT**
Symmetry **EXCELLENT**
Fluorescence **NONE**
Inscription(s) **IGI LG750554287**

Comments: This Laboratory Grown Diamond was created by Chemical Vapor Deposition (CVD) growth process.
Type IIa



Sample Image Used



November 25, 2025

IGI Report Number LG750554287
CUSHION MODIFIED BRILLIANT
LABORATORY GROWN DIAMOND
6.39 X 4.70 X 3.16 MM

Carat Weight **0.71 CARAT**
Color Grade **F**
Clarity Grade **VS 2**
Polish **EXCELLENT**
Symmetry **EXCELLENT**
Fluorescence **NONE**
Inscription(s) **IGI LG750554287**

Comments: This Laboratory Grown Diamond was created by Chemical Vapor Deposition (CVD) growth process. Type IIa



THIS DOCUMENT WAS PRODUCED WITH THE FOLLOWING SECURITY MEASURES: SPECIAL DOCUMENT PAPER, INK SCREENS, WATERMARK, BACKGROUND DESIGNS, HOLOGRAM AND OTHER SECURITY FEATURES NOT LISTED AND DO EXCEED DOCUMENT SECURITY INDUSTRY GUIDELINES.