



ELECTRONIC COPY

LG750556219
Report verification at igi.org



November 25, 2025
IGI Report Number **LG750556219**
Description **LABORATORY GROWN DIAMOND**
Shape and Cutting Style **CUSHION MODIFIED BRILLIANT**
Measurements **10.94 X 10.27 X 6.63 MM**
GRADING RESULTS
Carat Weight **7.07 CARATS**
Color Grade **FANCY INTENSE YELLOW**
Clarity Grade **VVS 2**

LABORATORY GROWN DIAMOND REPORT

November 25, 2025
IGI Report Number **LG750556219**
Description **LABORATORY GROWN DIAMOND**
Shape and Cutting Style **CUSHION MODIFIED BRILLIANT**
Measurements **10.94 X 10.27 X 6.63 MM**

GRADING RESULTS

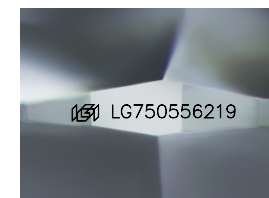
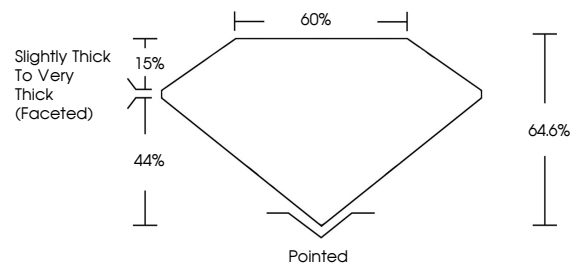
Carat Weight **7.07 CARATS**
Color Grade **FANCY INTENSE YELLOW**
Clarity Grade **VVS 2**

ADDITIONAL GRADING INFORMATION

Polish **EXCELLENT**
Symmetry **EXCELLENT**
Fluorescence **NONE**
Inscription(s) **IGI LG750556219**

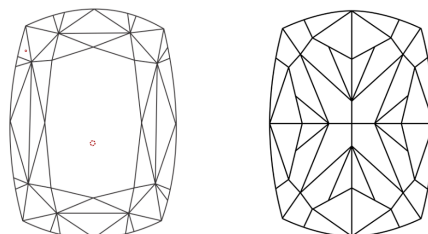
Comments: This Laboratory Grown Diamond was created by Chemical Vapor Deposition (CVD) growth process.

PROPORTIONS



Sample Image Used

CLARITY CHARACTERISTICS



KEY TO SYMBOLS

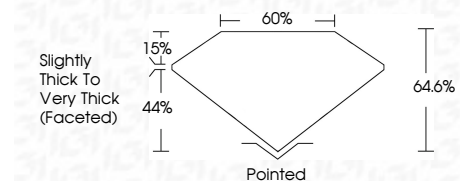
Red symbols indicate internal characteristics.
Green symbols indicate external characteristics.

COLOR

D E F G H I J Faint Very Light Light

CLARITY

FL	IF	VVS ¹⁻²	VS ¹⁻²	SI ¹⁻²	I ¹⁻³
Flawless	Internally Flawless	Very Very Slightly Included	Very Slightly Included	Slightly Included	Included



ADDITIONAL GRADING INFORMATION

Polish **EXCELLENT**
Symmetry **EXCELLENT**
Fluorescence **NONE**
Inscription(s) **IGI LG750556219**
Comments: This Laboratory Grown Diamond was created by Chemical Vapor Deposition (CVD) growth process.



November 25, 2025
IGI Report No LG750556219
CUSHION MODIFIED BRILLIANT
10.94 X 10.27 X 6.63 MM
7.07 CARATS
FANCY INTENSE YELLOW
VVS 2
64.6%
60%
Slightly Thick To Very Thick (Faceted)
Pointed
EXCELLENT
EXCELLENT
NONE
IGI LG750556219
Comments: This Laboratory Grown Diamond was created by Chemical Vapor Deposition (CVD) growth process.