



ELECTRONIC COPY

LG750560419
Report verification at igi.org



November 25, 2025

IGI Report Number **LG750560419**

Description **LABORATORY GROWN DIAMOND**

Shape and Cutting Style **HEART BRILLIANT**

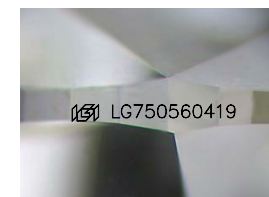
Measurements **10.23 X 12.02 X 7.04 MM**

GRADING RESULTS

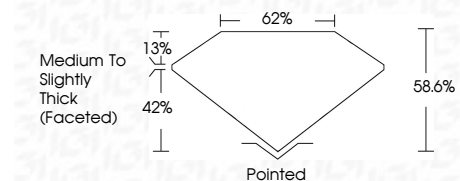
Carat Weight **5.10 CARATS**

Color Grade **E**

Clarity Grade **VVS 2**



Sample Image Used



ADDITIONAL GRADING INFORMATION

Polish **EXCELLENT**

Symmetry **EXCELLENT**

Fluorescence **NONE**

Inscription(s) **IGI LG750560419**

Comments: This Laboratory Grown Diamond was created by Chemical Vapor Deposition (CVD) growth process. Type IIa



| | | | | | | | | | | | | | |
|-------------------------|---------------------------|------------------------|--------------------|----------|--------------|--------------|------------|---|----------------|------------------|------------------|---|------------------------|
| November 25, 2025 | IGI Report No LG750560419 | HEART BRILLIANT | 5.10 CARATS | E | VVS 2 | 58.6% | 62% | Medium to Slightly Thick (Faceted) | Pointed | EXCELLENT | EXCELLENT | NONE | IGI LG750560419 |
| 10.23 X 12.02 X 7.04 MM | Carat Weight | Color Grade | Clarity Grade | Table | Depth | Girdle | Culet | Polish | Symmetry | Fluorescence | Inscription(s) | Comments: This Laboratory Grown Diamond was created by Chemical Vapor Deposition (CVD) growth process. Type IIa | |

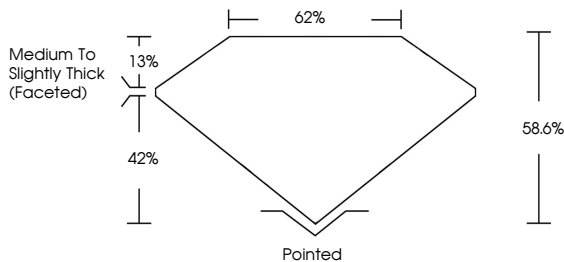
November 25, 2025
IGI Report Number **LG750560419**
Description **LABORATORY GROWN DIAMOND**
Shape and Cutting Style **HEART BRILLIANT**
Measurements **10.23 X 12.02 X 7.04 MM**

GRADING RESULTS
Carat Weight **5.10 CARATS**
Color Grade **E**
Clarity Grade **VVS 2**

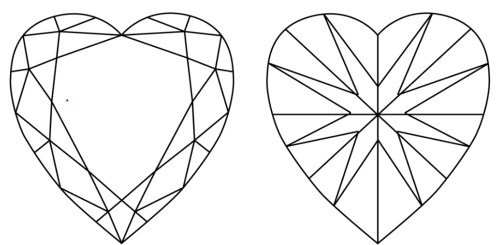
ADDITIONAL GRADING INFORMATION
Polish **EXCELLENT**
Symmetry **EXCELLENT**
Fluorescence **NONE**
Inscription(s) **IGI LG750560419**

Comments: This Laboratory Grown Diamond was created by Chemical Vapor Deposition (CVD) growth process. Type IIa

PROPORTIONS



CLARITY CHARACTERISTICS



KEY TO SYMBOLS
Red symbols indicate internal characteristics.
Green symbols indicate external characteristics.

COLOR

| | | | | | | | | | |
|---|---|---|---|---|---|---|-------|------------|-------|
| D | E | F | G | H | I | J | Faint | Very Light | Light |
|---|---|---|---|---|---|---|-------|------------|-------|

CLARITY

| | | | | | |
|----------|---------------------|-----------------------------|------------------------|-------------------|------------------|
| FL | IF | VVS ¹⁻² | VS ¹⁻² | SI ¹⁻² | I ¹⁻³ |
| Flawless | Internally Flawless | Very Very Slightly Included | Very Slightly Included | Slightly Included | Included |

