



**ELECTRONIC COPY**

LG750562055  
Report verification at igi.org



December 1, 2025

IGI Report Number **LG750562055**

Description **LABORATORY GROWN DIAMOND**

Shape and Cutting Style **SQUARE EMERALD CUT**

Measurements **7.76 X 7.66 X 5.13 MM**

**GRADING RESULTS**

Carat Weight **2.85 CARATS**

Color Grade **FANCY VIVID PINK**

Clarity Grade **VVS 2**

December 1, 2025  
IGI Report Number **LG750562055**  
Description **LABORATORY GROWN DIAMOND**  
Shape and Cutting Style **SQUARE EMERALD CUT**  
Measurements **7.76 X 7.66 X 5.13 MM**

**GRADING RESULTS**

Carat Weight **2.85 CARATS**

Color Grade **FANCY VIVID PINK**

Clarity Grade **VVS 2**

**ADDITIONAL GRADING INFORMATION**

Polish **EXCELLENT**

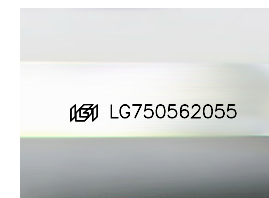
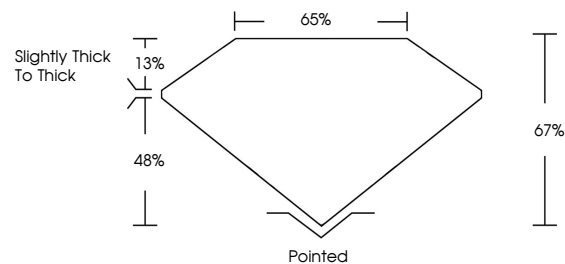
Symmetry **EXCELLENT**

Fluorescence **STRONG**

Inscription(s) **IGI LG750562055**

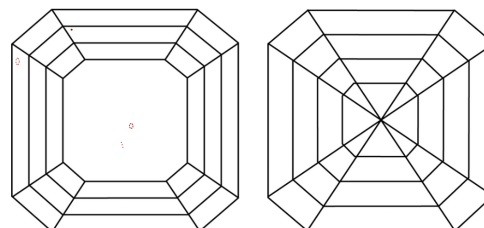
Comments: This Laboratory Grown Diamond was created by Chemical Vapor Deposition (CVD) growth process. Indications of post-growth treatment.

**PROPORTIONS**



Sample Image Used

**CLARITY CHARACTERISTICS**



**KEY TO SYMBOLS**

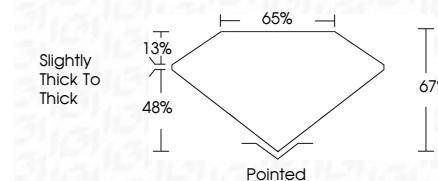
Red symbols indicate internal characteristics.  
Green symbols indicate external characteristics.

**COLOR**

D E F G H I J Faint Very Light Light

**CLARITY**

FL	IF	VVS <sup>1-2</sup>	VS <sup>1-2</sup>	SI <sup>1-2</sup>	I <sup>1-3</sup>
Flawless	Internally Flawless	Very Very Slightly Included	Very Slightly Included	Slightly Included	Included



**ADDITIONAL GRADING INFORMATION**

Polish **EXCELLENT**

Symmetry **EXCELLENT**

Fluorescence **STRONG**

Inscription(s) **IGI LG750562055**

Comments: This Laboratory Grown Diamond was created by Chemical Vapor Deposition (CVD) growth process. Indications of post-growth treatment.



**IGI**



December 1, 2025	2.85 CARATS	Pointed
IGI Report No LG750562055	FANCY VIVID PINK	EXCELLENT
SQUARE EMERALD CUT	VVS 2	EXCELLENT
7.76 X 7.66 X 5.13 MM	67%	STRONG
Carat Weight	65%	STRONG
Color Grade	Slightly Thick To Thick	IGI LG750562055
Clarity Grade		
Depth		
Table		
Grailes		
Culet		
Polish		
Symmetry		
Fluorescence		
Inscription(s)		

Comments: This Laboratory Grown Diamond was created by Chemical Vapor Deposition (CVD) growth process. Indications of post-growth treatment.