



**ELECTRONIC COPY**

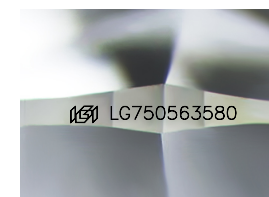
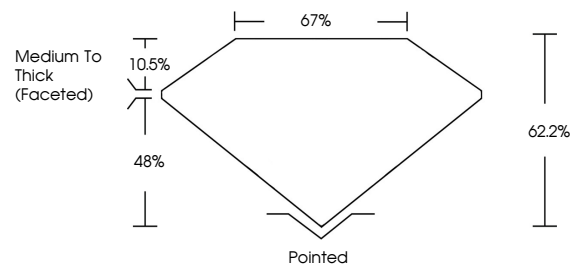
LG750563580  
Report verification at igi.org



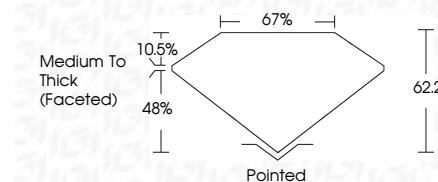
November 28, 2025  
IGI Report Number **LG750563580**  
Description **LABORATORY GROWN DIAMOND**  
Shape and Cutting Style **CUSHION MODIFIED BRILLIANT**  
Measurements **15.12 X 10.95 X 6.81 MM**  
**GRADING RESULTS**  
Carat Weight **10.02 CARATS**  
Color Grade **FANCY VIVID PINK**  
Clarity Grade **VS 2**

November 28, 2025  
IGI Report Number **LG750563580**  
Description **LABORATORY GROWN DIAMOND**  
Shape and Cutting Style **CUSHION MODIFIED BRILLIANT**  
Measurements **15.12 X 10.95 X 6.81 MM**  
**GRADING RESULTS**  
Carat Weight **10.02 CARATS**  
Color Grade **FANCY VIVID PINK**  
Clarity Grade **VS 2**

**PROPORTIONS**



Sample Image Used



**ADDITIONAL GRADING INFORMATION**

Polish **EXCELLENT**  
Symmetry **EXCELLENT**  
Fluorescence **STRONG**  
Inscription(s) **IGI LG750563580**

Comments: This Laboratory Grown Diamond was created by Chemical Vapor Deposition (CVD) growth process. Indications of post-growth treatment.

**ADDITIONAL GRADING INFORMATION**

Polish **EXCELLENT**  
Symmetry **EXCELLENT**  
Fluorescence **STRONG**  
Inscription(s) **IGI LG750563580**

Comments: This Laboratory Grown Diamond was created by Chemical Vapor Deposition (CVD) growth process. Indications of post-growth treatment.

**COLOR**

D E F G H I J Faint Very Light Light

**CLARITY**

FL	IF	VS <sup>1-2</sup>	VS <sup>1-2</sup>	SI <sup>1-2</sup>	I <sup>1-3</sup>
Flawless	Internally Flawless	Very Very Slightly Included	Very Slightly Included	Slightly Included	Included



**IGI**



November 28, 2025  
IGI Report No LG750563580  
CUSHION MODIFIED BRILLIANT

15.12 X 10.95 X 6.81 MM  
10.02 CARATS  
FANCY VIVID PINK  
VS 2  
62.2%  
67%  
Medium To Thick (Faceted)  
Pointed  
EXCELLENT  
EXCELLENT  
STRONG  
IGI LG750563580

Comments: This Laboratory Grown Diamond was created by Chemical Vapor Deposition (CVD) growth process. Indications of post-growth treatment.