



ELECTRONIC COPY

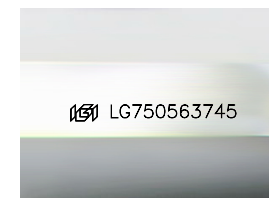
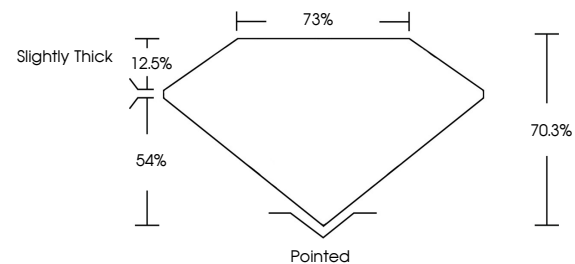
LG750563745
Report verification at igi.org



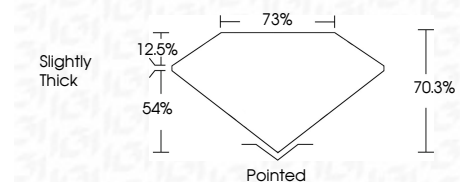
December 1, 2025
IGI Report Number **LG750563745**
Description **LABORATORY GROWN DIAMOND**
Shape and Cutting Style **PRINCESS CUT**
Measurements **6.86 X 6.76 X 4.75 MM**
GRADING RESULTS
Carat Weight **1.94 CARAT**
Color Grade **E**
Clarity Grade **VVS 1**

December 1, 2025
IGI Report Number **LG750563745**
Description **LABORATORY GROWN DIAMOND**
Shape and Cutting Style **PRINCESS CUT**
Measurements **6.86 X 6.76 X 4.75 MM**

PROPORTIONS



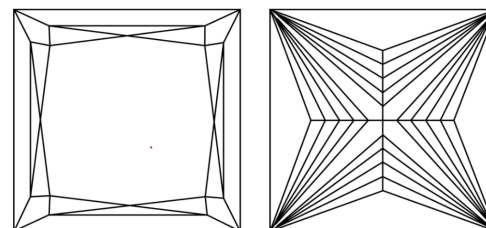
Sample Image Used



GRADING RESULTS

Carat Weight **1.94 CARAT**
Color Grade **E**
Clarity Grade **VVS 1**

CLARITY CHARACTERISTICS



COLOR

D E F G H I J Faint Very Light Light

CLARITY

| FL | IF | VVS ¹⁻² | VS ¹⁻² | SI ¹⁻² | I ¹⁻³ |
|----------|---------------------|-----------------------------|------------------------|-------------------|------------------|
| Flawless | Internally Flawless | Very Very Slightly Included | Very Slightly Included | Slightly Included | Included |

ADDITIONAL GRADING INFORMATION

Polish **EXCELLENT**
Symmetry **EXCELLENT**
Fluorescence **NONE**
Inscription(s) **IGI LG750563745**
Comments: This Laboratory Grown Diamond was created by Chemical Vapor Deposition (CVD) growth process. Type IIa

ADDITIONAL GRADING INFORMATION

Polish **EXCELLENT**
Symmetry **EXCELLENT**
Fluorescence **NONE**
Inscription(s) **IGI LG750563745**

KEY TO SYMBOLS

Red symbols indicate internal characteristics.
Green symbols indicate external characteristics.



December 1, 2025
IGI Report No **LG750563745**
PRINCESS CUT
6.86 X 6.76 X 4.75 MM
Carat Weight **1.94 CARAT**
Color Grade **E**
Clarity Grade **VVS 1**
Depth **70.3%**
Table **73%**
Girdle **Slightly Thick**
Culet **Pointed**
Polish **EXCELLENT**
Symmetry **EXCELLENT**
Fluorescence **NONE**
Inscription(s) **IGI LG750563745**
Comments: This Laboratory Grown Diamond was created by Chemical Vapor Deposition (CVD) growth process. Type IIa