



**ELECTRONIC COPY**

LG750567985  
Report verification at igi.org



December 3, 2025

IGI Report Number **LG750567985**

Description **LABORATORY GROWN DIAMOND**

Shape and Cutting Style **EMERALD CUT**

Measurements **11.35 X 8.02 X 5.17 MM**

**GRADING RESULTS**

Carat Weight **4.60 CARATS**

Color Grade **F**

Clarity Grade **VVS 2**

December 3, 2025  
IGI Report Number **LG750567985**  
Description **LABORATORY GROWN DIAMOND**  
Shape and Cutting Style **EMERALD CUT**  
Measurements **11.35 X 8.02 X 5.17 MM**

**GRADING RESULTS**

Carat Weight **4.60 CARATS**

Color Grade **F**

Clarity Grade **VVS 2**

**ADDITIONAL GRADING INFORMATION**

Polish **EXCELLENT**

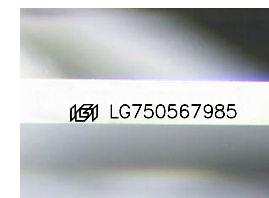
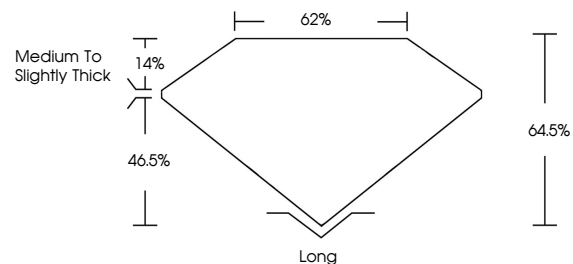
Symmetry **EXCELLENT**

Fluorescence **NONE**

Inscription(s) **IGI LG750567985**

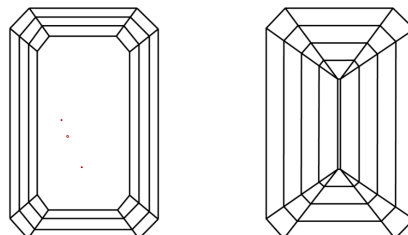
Comments: This Laboratory Grown Diamond was created by Chemical Vapor Deposition (CVD) growth process. Type IIa

**PROPORTIONS**



Sample Image Used

**CLARITY CHARACTERISTICS**



**KEY TO SYMBOLS**

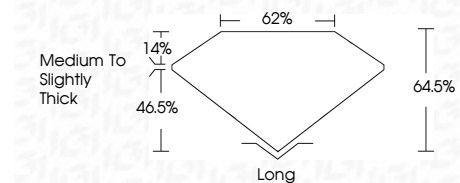
Red symbols indicate internal characteristics.  
Green symbols indicate external characteristics.

**COLOR**

D E F G H I J Faint Very Light Light

**CLARITY**

FL	IF	VVS <sup>1-2</sup>	VS <sup>1-2</sup>	SI <sup>1-2</sup>	I <sup>1-3</sup>
Flawless	Internally Flawless	Very Very Slightly Included	Very Slightly Included	Slightly Included	Included



**ADDITIONAL GRADING INFORMATION**

Polish **EXCELLENT**

Symmetry **EXCELLENT**

Fluorescence **NONE**

Inscription(s) **IGI LG750567985**

Comments: This Laboratory Grown Diamond was created by Chemical Vapor Deposition (CVD) growth process. Type IIa



**IGI**



December 3, 2025  
IGI Report No LG750567985  
**EMERALD CUT**  
11.35 X 8.02 X 5.17 MM  
Carat Weight **4.60 CARATS**  
Color Grade **F**  
Clarity Grade **VVS 2**  
Depth **64.6%**  
Table **62%**  
Girdle **Medium to Slightly Thick**  
Culet **Long**  
Polish **EXCELLENT**  
Symmetry **EXCELLENT**  
Fluorescence **NONE**  
Inscription(s) **IGI LG750567985**  
Comments: This Laboratory Grown Diamond was created by Chemical Vapor Deposition (CVD) growth process. Type IIa