



**ELECTRONIC COPY**

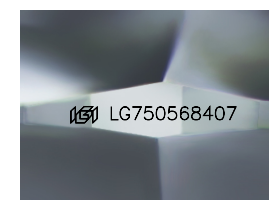
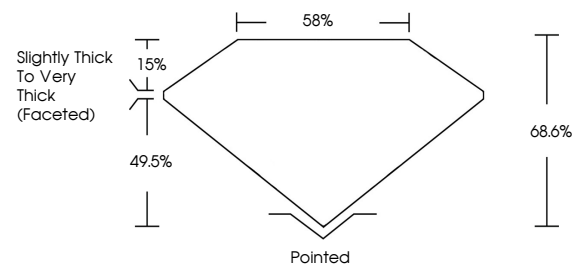
LG750568407  
Report verification at igi.org



December 4, 2025  
IGI Report Number **LG750568407**  
Description **LABORATORY GROWN DIAMOND**  
Shape and Cutting Style **CUSHION MODIFIED BRILLIANT**  
Measurements **10.10 X 7.42 X 5.09 MM**  
**GRADING RESULTS**  
Carat Weight **3.27 CARATS**  
Color Grade **E**  
Clarity Grade **VS 1**

December 4, 2025  
IGI Report Number **LG750568407**  
Description **LABORATORY GROWN DIAMOND**  
Shape and Cutting Style **CUSHION MODIFIED BRILLIANT**  
Measurements **10.10 X 7.42 X 5.09 MM**

**PROPORTIONS**

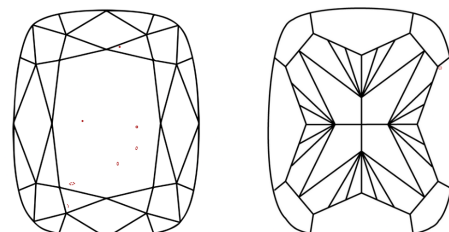


Sample Image Used

**GRADING RESULTS**

Carat Weight **3.27 CARATS**  
Color Grade **E**  
Clarity Grade **VS 1**

**CLARITY CHARACTERISTICS**



**KEY TO SYMBOLS**

Red symbols indicate internal characteristics.  
Green symbols indicate external characteristics.

**ADDITIONAL GRADING INFORMATION**

Polish **EXCELLENT**  
Symmetry **EXCELLENT**  
Fluorescence **NONE**  
Inscription(s) **IGI LG750568407**

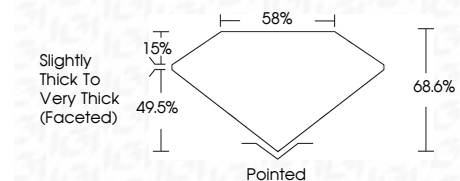
Comments: This Laboratory Grown Diamond was created by Chemical Vapor Deposition (CVD) growth process. Type IIa

**COLOR**

D E F G H I J Faint Very Light Light

**CLARITY**

FL	IF	VS <sup>1-2</sup>	VS <sup>1-2</sup>	SI <sup>1-2</sup>	I <sup>1-3</sup>
Flawless	Internally Flawless	Very Very Slightly Included	Very Slightly Included	Slightly Included	Included



**ADDITIONAL GRADING INFORMATION**

Polish **EXCELLENT**  
Symmetry **EXCELLENT**  
Fluorescence **NONE**  
Inscription(s) **IGI LG750568407**  
Comments: This Laboratory Grown Diamond was created by Chemical Vapor Deposition (CVD) growth process. Type IIa



December 4, 2025  
IGI Report No **LG750568407**  
**CUSHION MODIFIED BRILLIANT**  
**10.10 X 7.42 X 5.09 MM**  
Carat Weight **3.27 CARATS**  
Color Grade **E**  
Clarity Grade **VS 1**  
Depth **68.6%**  
Table **58%**  
Girdle **Slightly Thick To Very Thick (Faceted)**  
Culet **Pointed**  
Polish **EXCELLENT**  
Symmetry **EXCELLENT**  
Fluorescence **NONE**  
Inscription(s) **IGI LG750568407**  
Comments: This Laboratory Grown Diamond was created by Chemical Vapor Deposition (CVD) growth process. Type IIa