



ELECTRONIC COPY

LG750577420
Report verification at igi.org



December 20, 2025

IGI Report Number **LG750577420**

Description **LABORATORY GROWN DIAMOND**

Shape and Cutting Style **EMERALD CUT**

Measurements **8.74 X 5.95 X 4.21 MM**

GRADING RESULTS

Carat Weight **2.32 CARATS**

Color Grade **E**

Clarity Grade **VS 1**

December 20, 2025
IGI Report Number **LG750577420**
Description **LABORATORY GROWN DIAMOND**
Shape and Cutting Style **EMERALD CUT**
Measurements **8.74 X 5.95 X 4.21 MM**

GRADING RESULTS

Carat Weight **2.32 CARATS**

Color Grade **E**

Clarity Grade **VS 1**

ADDITIONAL GRADING INFORMATION

Polish **EXCELLENT**

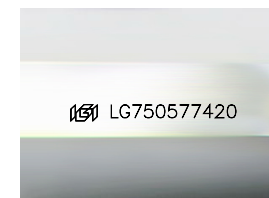
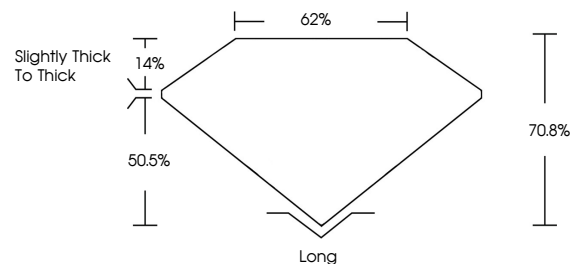
Symmetry **EXCELLENT**

Fluorescence **NONE**

Inscription(s) **IGI LG750577420**

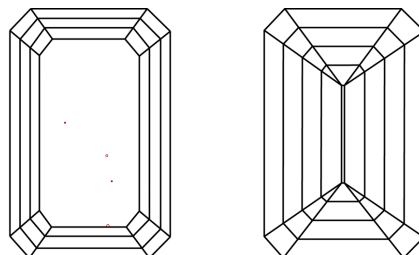
Comments: This Laboratory Grown Diamond was created by Chemical Vapor Deposition (CVD) growth process.
Type IIa

PROPORTIONS



Sample Image Used

CLARITY CHARACTERISTICS



KEY TO SYMBOLS

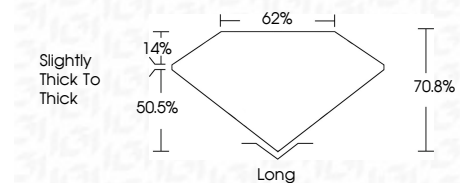
Red symbols indicate internal characteristics.
Green symbols indicate external characteristics.

COLOR

D E F G H I J Faint Very Light Light

CLARITY

FL	IF	VS ¹⁻²	VS ¹⁻²	SI ¹⁻²	I ¹⁻³
Flawless	Internally Flawless	Very Very Slightly Included	Very Slightly Included	Slightly Included	Included



ADDITIONAL GRADING INFORMATION

Polish **EXCELLENT**

Symmetry **EXCELLENT**

Fluorescence **NONE**

Inscription(s) **IGI LG750577420**

Comments: This Laboratory Grown Diamond was created by Chemical Vapor Deposition (CVD) growth process.
Type IIa



IGI



December 20, 2025	IGI Report No. LG750577420	EMERALD CUT	8.74 X 5.95 X 4.21 MM	2.32 CARATS	E	VS 1	70.8%	62%	Slightly thick to thick	Long	EXCELLENT	EXCELLENT	NONE	IGI LG750577420
Polish	Symmetry	Fluorescence	Inscription(s)	Carat Weight	Color Grade	Clarity Grade	Depth	Table	Girdle	Culet	Polish	Symmetry	Fluorescence	Inscription(s)
EXCELLENT	EXCELLENT	NONE	IGI LG750577420	2.32 CARATS	E	VS 1	70.8%	62%	Slightly thick to thick	Long	EXCELLENT	EXCELLENT	NONE	IGI LG750577420

Comments: This Laboratory Grown Diamond was created by Chemical Vapor Deposition (CVD) growth process.
Type IIa