



ELECTRONIC COPY

LABORATORY GROWN DIAMOND REPORT

December 20, 2025  
IGI Report Number LG750577467  
Description LABORATORY GROWN DIAMOND  
Shape and Cutting Style PRINCESS CUT  
Measurements 6.15 X 6.09 X 4.45 MM

GRADING RESULTS

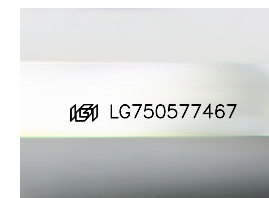
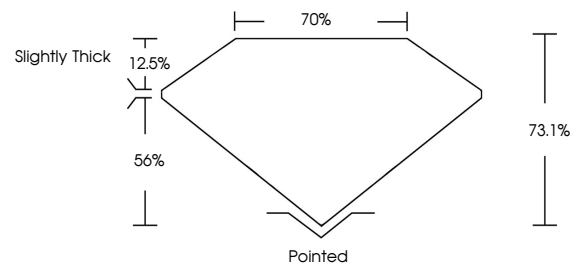
Carat Weight 1.50 CARAT  
Color Grade E  
Clarity Grade SI 2

ADDITIONAL GRADING INFORMATION

Polish EXCELLENT  
Symmetry VERY GOOD  
Fluorescence NONE  
Inscription(s) IGI LG750577467

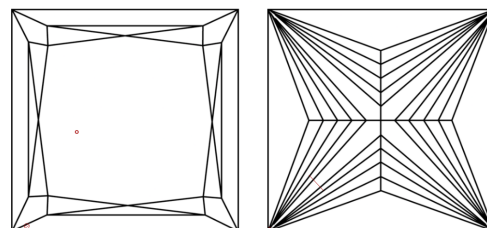
Comments: This Laboratory Grown Diamond was created by Chemical Vapor Deposition (CVD) growth process.  
Type IIa

PROPORTIONS



Sample Image Used

CLARITY CHARACTERISTICS



KEY TO SYMBOLS

Red symbols indicate internal characteristics.  
Green symbols indicate external characteristics.

COLOR

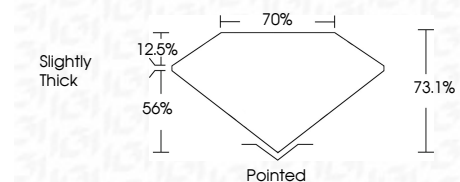
D E F G H I J Faint Very Light Light

CLARITY

FL IF VS<sup>1-2</sup> VS<sup>1-2</sup> SI<sup>1-2</sup> I<sup>1-3</sup>  
Flawless Internally Flawless Very Very Slightly Included Very Slightly Included Slightly Included Included



December 20, 2025  
IGI Report Number LG750577467  
Description LABORATORY GROWN DIAMOND  
Shape and Cutting Style PRINCESS CUT  
Measurements 6.15 X 6.09 X 4.45 MM  
GRADING RESULTS  
Carat Weight 1.50 CARAT  
Color Grade E  
Clarity Grade SI 2



ADDITIONAL GRADING INFORMATION

Polish EXCELLENT  
Symmetry VERY GOOD  
Fluorescence NONE  
Inscription(s) IGI LG750577467  
Comments: This Laboratory Grown Diamond was created by Chemical Vapor Deposition (CVD) growth process.  
Type IIa



December 20, 2025  
IGI Report No LG750577467  
PRINCESS CUT  
6.15 X 6.09 X 4.45 MM  
1.50 CARAT  
Color Grade E  
Clarity Grade SI 2  
Depth 73.1%  
Table 70%  
Girdle Slightly Thick  
Culet Pointed  
Polish EXCELLENT  
Symmetry VERY GOOD  
Fluorescence NONE  
Inscription(s) IGI LG750577467  
Comments: This Laboratory Grown Diamond was created by Chemical Vapor Deposition (CVD) growth process.  
Type IIa