



November 25, 2025

IGI Report Number **LG750590912**

**OVAL BRILLIANT
LABORATORY GROWN DIAMOND
7.58 X 5.30 X 3.14 MM**

Carat Weight	0.81 CARAT
Color Grade	E
Clarity Grade	VVS 2
Polish	VERY GOOD
Symmetry	VERY GOOD
Fluorescence	NONE
Inscription(s)	IGI LG750590912

Comments: This Laboratory Grown Diamond was created by Chemical Vapor Deposition (CVD) growth process. Type IIa

LABORATORY GROWN DIAMOND REPORT

November 25, 2025
IGI Report Number **LG750590912**
Description **LABORATORY GROWN DIAMOND**
Shape and Cutting Style **OVAL BRILLIANT**
Measurements **7.58 X 5.30 X 3.14 MM**

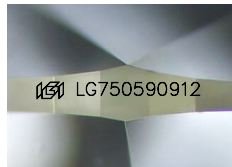
GRADING RESULTS

Carat Weight **0.81 CARAT**
Color Grade **E**
Clarity Grade **VVS 2**

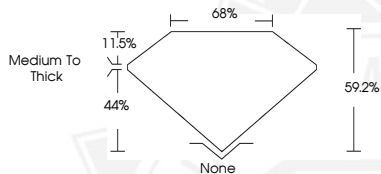
ADDITIONAL GRADING INFORMATION

Polish **VERY GOOD**
Symmetry **VERY GOOD**
Fluorescence **NONE**
Inscription(s) **IGI LG750590912**

Comments: This Laboratory Grown Diamond was created by Chemical Vapor Deposition (CVD) growth process. Type IIa



Sample Image Used



November 25, 2025

IGI Report Number **LG750590912**

**OVAL BRILLIANT
LABORATORY GROWN DIAMOND
7.58 X 5.30 X 3.14 MM**

Carat Weight	0.81 CARAT
Color Grade	E
Clarity Grade	VVS 2
Polish	VERY GOOD
Symmetry	VERY GOOD
Fluorescence	NONE
Inscription(s)	IGI LG750590912

Comments: This Laboratory Grown Diamond was created by Chemical Vapor Deposition (CVD) growth process. Type IIa



THIS DOCUMENT WAS PRODUCED WITH THE FOLLOWING SECURITY MEASURES: SPECIAL DOCUMENT PAPER, INK SCREENS, WATERMARK, BACKGROUND DESIGNS, HOLOGRAM AND OTHER SECURITY FEATURES NOT LISTED AND DO EXCEED DOCUMENT SECURITY INDUSTRY GUIDELINES.