



ELECTRONIC COPY

LABORATORY GROWN DIAMOND REPORT

November 26, 2025
IGI Report Number **LG750594732**
Description **LABORATORY GROWN DIAMOND**
Shape and Cutting Style **OVAL MODIFIED BRILLIANT**
Measurements **13.90 X 9.30 X 5.97 MM**

GRADING RESULTS

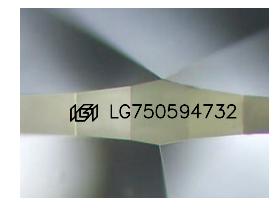
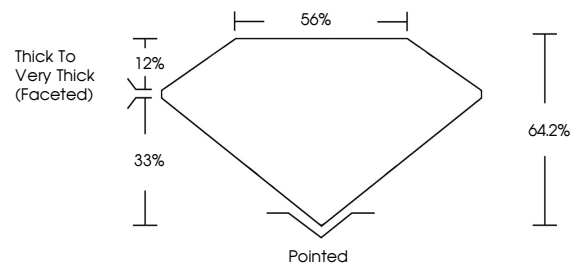
Carat Weight **6.05 CARATS**
Color Grade **FANCY INTENSE GREYISH YELLOW**
Clarity Grade **VS 1**

ADDITIONAL GRADING INFORMATION

Polish **EXCELLENT**
Symmetry **EXCELLENT**
Fluorescence **NONE**
Inscription(s) **IGI LG750594732**

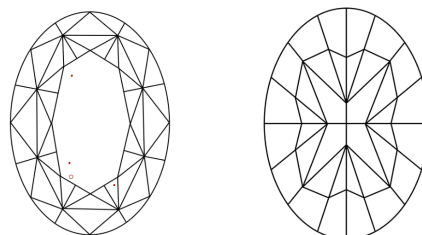
Comments: This Laboratory Grown Diamond was created by Chemical Vapor Deposition (CVD) growth process.

PROPORTIONS



Sample Image Used

CLARITY CHARACTERISTICS



KEY TO SYMBOLS

Red symbols indicate internal characteristics.
Green symbols indicate external characteristics.

COLOR

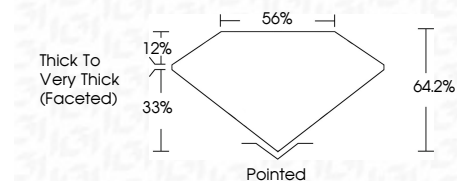
D E F G H I J Faint Very Light Light

CLARITY

FL IF VS¹⁻² VS¹⁻² SI¹⁻² I¹⁻³
Flawless Internally Flawless Very Very Slightly Included Very Slightly Included Slightly Included Included



November 26, 2025
IGI Report Number **LG750594732**
Description **LABORATORY GROWN DIAMOND**
Shape and Cutting Style **OVAL MODIFIED BRILLIANT**
Measurements **13.90 X 9.30 X 5.97 MM**
GRADING RESULTS
Carat Weight **6.05 CARATS**
Color Grade **FANCY INTENSE GREYISH YELLOW**
Clarity Grade **VS 1**



ADDITIONAL GRADING INFORMATION

Polish **EXCELLENT**
Symmetry **EXCELLENT**
Fluorescence **NONE**
Inscription(s) **IGI LG750594732**
Comments: This Laboratory Grown Diamond was created by Chemical Vapor Deposition (CVD) growth process.



November 26, 2025
IGI Report No **LG750594732**
OVAL MODIFIED BRILLIANT
6.05 CARATS
Carat Weight
Color Grade **FANCY INTENSE GREYISH YELLOW**
Clarity Grade **VS 1**
Depth **64.2%**
Table **56%**
Crown Height **12%**
Pavilion Height **33%**
Thick to Very Thick (Faceted)
Culet **Pointed**
Polish **EXCELLENT**
Symmetry **EXCELLENT**
Fluorescence **NONE**
Inscription(s) **IGI LG750594732**
Comments: This Laboratory Grown Diamond was created by Chemical Vapor Deposition (CVD) growth process.