



November 24, 2025

**IGI Report Number** LG750596557  
**ROUND BRILLIANT**  
**LABORATORY GROWN DIAMOND**  
**4.19 - 4.22 X 2.57 MM**

**Carat Weight** 0.28 CARAT  
**Color Grade** D  
**Clarity Grade** VS 1  
**Cut Grade** EXCELLENT  
**Polish** EXCELLENT  
**Symmetry** EXCELLENT  
**Fluorescence** NONE  
**Inscription(s)** IGI LG750596557

Comments: This Laboratory Grown Diamond was created by Chemical Vapor Deposition (CVD) growth process. Type IIa

**LABORATORY GROWN DIAMOND REPORT**

November 24, 2025  
IGI Report Number **LG750596557**  
Description **LABORATORY GROWN DIAMOND**  
Shape and Cutting Style **ROUND BRILLIANT**  
Measurements **4.19 - 4.22 X 2.57 MM**

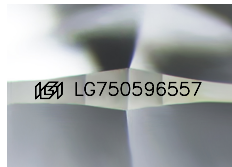
**GRADING RESULTS**

**Carat Weight** 0.28 CARAT  
**Color Grade** D  
**Clarity Grade** VS 1  
**Cut Grade** EXCELLENT

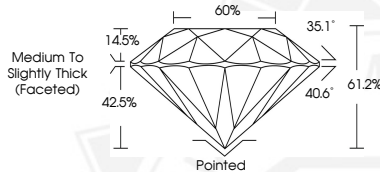
**ADDITIONAL GRADING INFORMATION**

**Polish** EXCELLENT  
**Symmetry** EXCELLENT  
**Fluorescence** NONE  
**Inscription(s)** IGI LG750596557

Comments: This Laboratory Grown Diamond was created by Chemical Vapor Deposition (CVD) growth process. Type IIa



Sample Image Used



November 24, 2025

**IGI Report Number** LG750596557  
**ROUND BRILLIANT**  
**LABORATORY GROWN DIAMOND**  
**4.19 - 4.22 X 2.57 MM**

**Carat Weight** 0.28 CARAT  
**Color Grade** D  
**Clarity Grade** VS 1  
**Cut Grade** EXCELLENT  
**Polish** EXCELLENT  
**Symmetry** EXCELLENT  
**Fluorescence** NONE  
**Inscription(s)** IGI LG750596557

Comments: This Laboratory Grown Diamond was created by Chemical Vapor Deposition (CVD) growth process. Type IIa



THIS DOCUMENT WAS PRODUCED WITH THE FOLLOWING SECURITY MEASURES: SPECIAL DOCUMENT PAPER, INK SCREENS, WATERMARK, BACKGROUND DESIGNS, HOLOGRAM AND OTHER SECURITY FEATURES NOT LISTED AND DO EXCEED DOCUMENT SECURITY INDUSTRY GUIDELINES.