



**ELECTRONIC COPY**

LG751502918  
Report verification at igi.org



December 1, 2025  
IGI Report Number **LG751502918**  
Description **LABORATORY GROWN DIAMOND**  
Shape and Cutting Style **CUSHION MODIFIED BRILLIANT**  
Measurements **17.92 X 14.87 X 9.56 MM**  
**GRADING RESULTS**  
Carat Weight **23.83 CARATS**  
Color Grade **FANCY VIVID PINK**  
Clarity Grade **VS 1**

December 1, 2025  
IGI Report Number **LG751502918**  
Description **LABORATORY GROWN DIAMOND**  
Shape and Cutting Style **CUSHION MODIFIED BRILLIANT**  
Measurements **17.92 X 14.87 X 9.56 MM**

**GRADING RESULTS**

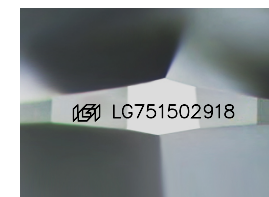
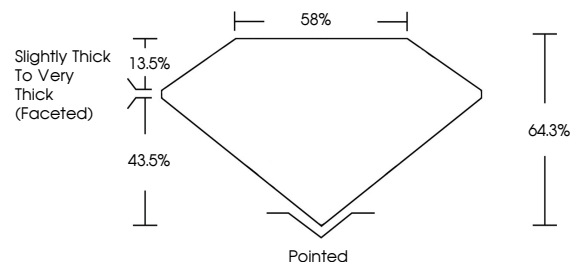
Carat Weight **23.83 CARATS**  
Color Grade **FANCY VIVID PINK**  
Clarity Grade **VS 1**

**ADDITIONAL GRADING INFORMATION**

Polish **EXCELLENT**  
Symmetry **EXCELLENT**  
Fluorescence **SLIGHT**  
Inscription(s) **IGI LG751502918**

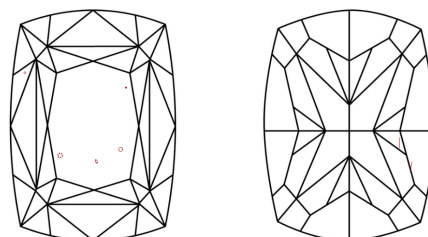
Comments: This Laboratory Grown Diamond was created by Chemical Vapor Deposition (CVD) growth process. Indications of post-growth treatment.

**PROPORTIONS**



Sample Image Used

**CLARITY CHARACTERISTICS**



**KEY TO SYMBOLS**

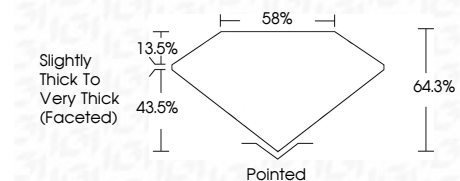
Red symbols indicate internal characteristics.  
Green symbols indicate external characteristics.

**COLOR**

D E F G H I J Faint Very Light Light

**CLARITY**

FL	IF	VS <sup>1-2</sup>	VS <sup>1-2</sup>	SI <sup>1-2</sup>	I <sup>1-3</sup>
Flawless	Internally Flawless	Very Very Slightly Included	Very Slightly Included	Slightly Included	Included



**ADDITIONAL GRADING INFORMATION**

Polish **EXCELLENT**  
Symmetry **EXCELLENT**  
Fluorescence **SLIGHT**  
Inscription(s) **IGI LG751502918**  
Comments: This Laboratory Grown Diamond was created by Chemical Vapor Deposition (CVD) growth process. Indications of post-growth treatment.



December 1, 2025  
IGI Report No LG751502918  
**CUSHION MODIFIED BRILLIANT**  
17.92 X 14.87 X 9.56 MM  
23.83 CARATS  
FANCY VIVID PINK  
VS 1  
64.3%  
43.5%  
Slightly Thick To Very Thick (Faceted)  
Pointed  
EXCELLENT  
EXCELLENT  
SLIGHT  
IGI LG751502918  
Comments: This Laboratory Grown Diamond was created by Chemical Vapor Deposition (CVD) growth process. Indications of post-growth treatment.