



ELECTRONIC COPY

LG751502919
Report verification at igi.org



December 2, 2025
IGI Report Number **LG751502919**
Description **LABORATORY GROWN DIAMOND**
Shape and Cutting Style **CUT CORNERED
RECTANGULAR MIXED CUT**
Measurements **19.15 X 12.85 X 8.76 MM**
GRADING RESULTS
Carat Weight **21.33 CARATS**
Color Grade **FANCY VIVID PINK**
Clarity Grade **VS 2**

December 2, 2025
IGI Report Number **LG751502919**
Description **LABORATORY GROWN DIAMOND**
Shape and Cutting Style **CUT CORNERED RECTANGULAR
MIXED CUT**
Measurements **19.15 X 12.85 X 8.76 MM**

GRADING RESULTS

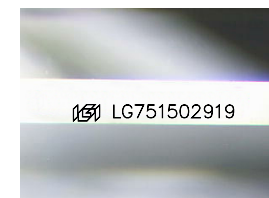
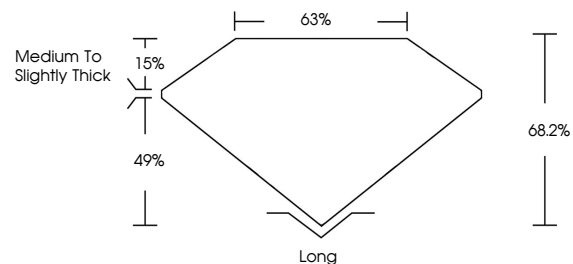
Carat Weight **21.33 CARATS**
Color Grade **FANCY VIVID PINK**
Clarity Grade **VS 2**

ADDITIONAL GRADING INFORMATION

Polish **EXCELLENT**
Symmetry **EXCELLENT**
Fluorescence **SLIGHT**
Inscription(s) **IGI LG751502919**

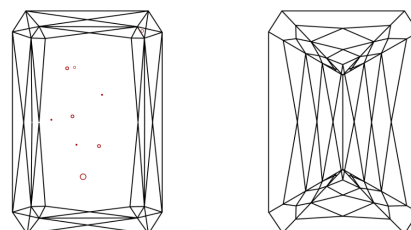
Comments: This Laboratory Grown Diamond was created by Chemical Vapor Deposition (CVD) growth process. Indications of post-growth treatment.

PROPORTIONS



Sample Image Used

CLARITY CHARACTERISTICS



KEY TO SYMBOLS

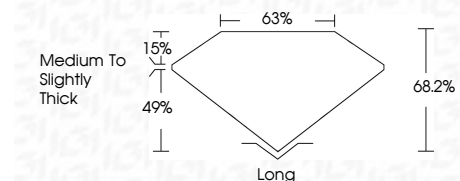
Red symbols indicate internal characteristics.
Green symbols indicate external characteristics.

COLOR

D E F G H I J Faint Very Light Light

CLARITY

FL	IF	VS ¹⁻²	VS ¹⁻²	SI ¹⁻²	I ¹⁻³
Flawless	Internally Flawless	Very Very Slightly Included	Very Slightly Included	Slightly Included	Included



ADDITIONAL GRADING INFORMATION

Polish **EXCELLENT**
Symmetry **EXCELLENT**
Fluorescence **SLIGHT**
Inscription(s) **IGI LG751502919**
Comments: This Laboratory Grown Diamond was created by Chemical Vapor Deposition (CVD) growth process. Indications of post-growth treatment.



December 2, 2025
IGI Report No LG751502919
CUT CORNERED RECT. MIXED CUT
19.15 X 12.85 X 8.76 MM
21.33 CARATS
FANCY VIVID PINK
VS 2
68.2%
63%
Medium to Slightly Thick
Long
EXCELLENT
EXCELLENT
SLIGHT
IGI LG751502919
Comments: This Laboratory Grown Diamond was created by Chemical Vapor Deposition (CVD) growth process. Indications of post-growth treatment.