



November 24, 2025

IGI Report Number **LG751505325**

**EMERALD CUT
LABORATORY GROWN DIAMOND**

4.88 X 3.34 X 2.21 MM

Carat Weight	0.34 CARAT
Color Grade	D
Clarity Grade	I.F.
Polish	EXCELLENT
Symmetry	EXCELLENT
Fluorescence	NONE
Inscription(s)	IGI LG751505325

Comments: This Laboratory Grown Diamond was created by Chemical Vapor Deposition (CVD) growth process. Type IIa

LABORATORY GROWN DIAMOND REPORT

November 24, 2025

IGI Report Number **LG751505325**

Description **LABORATORY GROWN DIAMOND**

Shape and Cutting Style **EMERALD CUT**

Measurements **4.88 X 3.34 X 2.21 MM**

GRADING RESULTS

Carat Weight **0.34 CARAT**

Color Grade **D**

Clarity Grade **INTERNALLY FLAWLESS**

ADDITIONAL GRADING INFORMATION

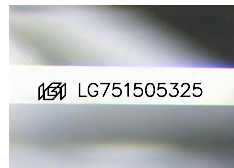
Polish **EXCELLENT**

Symmetry **EXCELLENT**

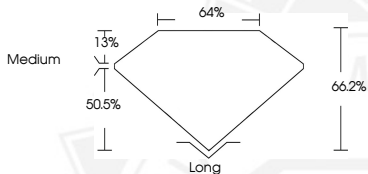
Fluorescence **NONE**

Inscription(s) **IGI LG751505325**

Comments: This Laboratory Grown Diamond was created by Chemical Vapor Deposition (CVD) growth process. Type IIa



Sample Image Used



November 24, 2025

IGI Report Number **LG751505325**

**EMERALD CUT
LABORATORY GROWN DIAMOND**

4.88 X 3.34 X 2.21 MM

Carat Weight	0.34 CARAT
Color Grade	D
Clarity Grade	I.F.
Polish	EXCELLENT
Symmetry	EXCELLENT
Fluorescence	NONE
Inscription(s)	IGI LG751505325

Comments: This Laboratory Grown Diamond was created by Chemical Vapor Deposition (CVD) growth process. Type IIa



THIS DOCUMENT WAS PRODUCED WITH THE FOLLOWING SECURITY MEASURES: SPECIAL DOCUMENT PAPER, INK SCREENS, WATERMARK, BACKGROUND DESIGNS, HOLOGRAM AND OTHER SECURITY FEATURES NOT LISTED AND DO EXCEED DOCUMENT SECURITY INDUSTRY GUIDELINES.