



**ELECTRONIC COPY**

## LABORATORY GROWN DIAMOND REPORT

November 25, 2025	
IGI Report Number	LG751505843
Description	LABORATORY GROWN DIAMOND
Shape and Cutting Style	EMERALD CUT
Measurements	9.74 X 6.92 X 4.66 MM

## GRADING RESULTS

Carat Weight	3.04 CARATS
Color Grade	G
Clarity Grade	VVS 1

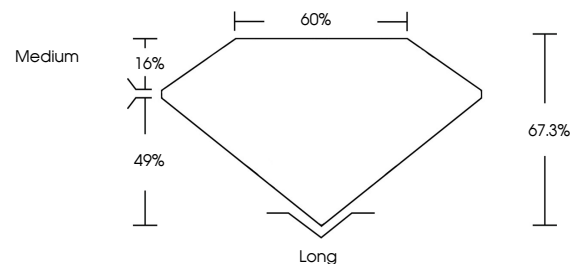
### ADDITIONAL GRADING INFORMATION

Polish	EXCELLENT
Symmetry	EXCELLENT
Fluorescence	NONE
Inscription(s)	 LG751505843

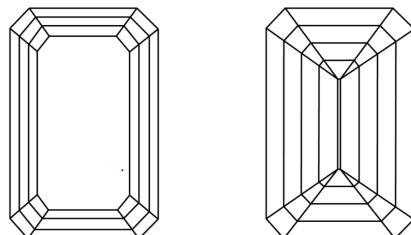
Comments: This Laboratory Grown Diamond was created by Chemical Vapor Deposition (CVD) growth process.  
Type IIa

LG751505843  
Report verification at [igi.org](https://igi.org)

## PROPORTIONS

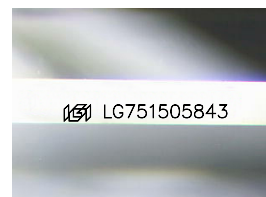


## CLARITY CHARACTERISTICS



## KEY TO SYMBOLS

Red symbols indicate internal characteristics.  
Green symbols indicate external characteristics.



Sample Image Used

## COLOR

D E F G H I J Faint Very Light Light

## CLARITY

FL	IF	VVS <sup>1-2</sup>	VS <sup>1-2</sup>	SI <sup>1-2</sup>	I <sup>1-3</sup>
Flawless	Internally Flawless	Very Very Slightly Included	Very Slightly Included	Slightly Included	Included

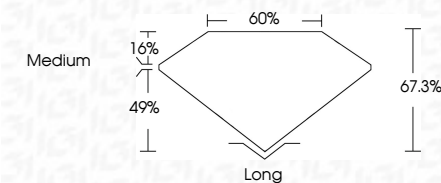
## LABORATORY GROWN DIAMOND REPORT



November 25, 2025	
IGI Report Number	LG751505843
Description	LABORATORY GROWN DIAMOND
Shape and Cutting Style	EMERALD CUT
Measurements	9.74 X 6.92 X 4.66 MM

## GRADING RESULTS

Carat Weight	3.04 CARATS
Color Grade	G
Clarity Grade	VVS 1



### ADDITIONAL GRADING INFORMATION

Polish	EXCELLENT
Symmetry	EXCELLENT
Fluorescence	NONE
Inscription(s)	 LG751505843
<p>Comments: This Laboratory Grown Diamond was created by Chemical Vapor Deposition (CVD) growth process.</p> <p>Type IIa</p>	



IG

**www.igi.org**

© IGI 2020, International Gemological Institute

FD - 10 20



THIS DOCUMENT WAS PRODUCED WITH THE FOLLOWING SECURITY MEASURES: SPECIAL DOCUMENT PAPER, INK SCREENS, WATERMARK, BACKGROUND DESIGNS, HOLOGRAM AND OTHER SECURITY FEATURES NOT LISTED AND DO EXCEED DOCUMENT SECURITY INDUSTRY GUIDELINES

November 25, 2025  
GI Report No LG751505843

<b>GI Report No</b>	<b>L6781905843</b>
<b>Cut</b>	<b>HEART</b>
<b>Color</b>	<b>E</b>
<b>Clarity</b>	<b>VVS 1</b>
<b>Depth</b>	<b>67.3%</b>
<b>Table</b>	<b>65%</b>
<b>Girdle</b>	<b>Medium</b>
<b>Culet</b>	<b>Long</b>
<b>Symmetry</b>	<b>EXCELLENT</b>
<b>Fluorescence</b>	<b>EXCELLENT</b>
<b>Measurements (mm)</b>	<b>NONE</b>
<b>Weight (Carats)</b>	<b>3.04 CARATS</b>
<b>Length (mm)</b>	<b>7.74 X 6.92 X 4.66 MM</b>
<b>Width (mm)</b>	<b>7.74 X 6.92 X 4.66 MM</b>
<b>Thickness (mm)</b>	<b>4.66 MM</b>
<b>Comments</b>	<b>See L6781905843</b>

**Comments:**  
This Laboratory Grown Diamond was  
created by Chemical Vapor Deposition  
(CVD) growth process.