



ELECTRONIC COPY

LG751511613
Report verification at igi.org



November 27, 2025
IGI Report Number LG751511613
Description LABORATORY GROWN DIAMOND
Shape and Cutting Style CUT CORNERED RECTANGULAR MODIFIED BRILLIANT
Measurements 7.85 X 5.29 X 3.62 MM
GRADING RESULTS
Carat Weight 1.28 CARAT
Color Grade D
Clarity Grade VS 1

LABORATORY GROWN DIAMOND REPORT

November 27, 2025
IGI Report Number LG751511613
Description LABORATORY GROWN DIAMOND
Shape and Cutting Style CUT CORNERED RECTANGULAR MODIFIED BRILLIANT
Measurements 7.85 X 5.29 X 3.62 MM

GRADING RESULTS

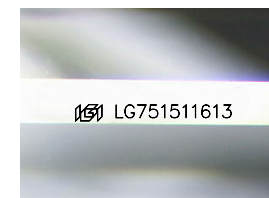
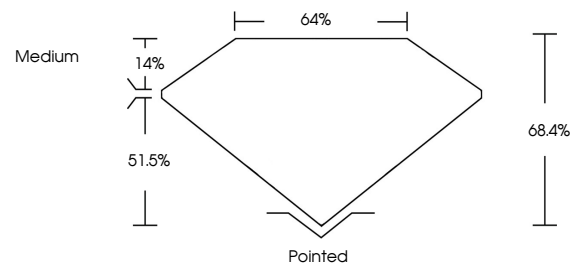
Carat Weight 1.28 CARAT
Color Grade D
Clarity Grade VS 1

ADDITIONAL GRADING INFORMATION

Polish EXCELLENT
Symmetry EXCELLENT
Fluorescence NONE
Inscription(s) LG751511613

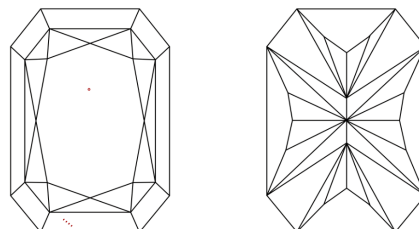
Comments: This Laboratory Grown Diamond was created by Chemical Vapor Deposition (CVD) growth process. Type IIa

PROPORTIONS



Sample Image Used

CLARITY CHARACTERISTICS



KEY TO SYMBOLS

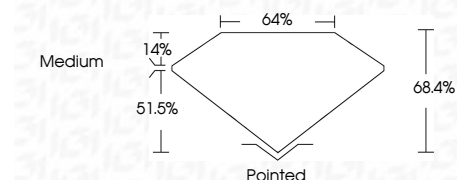
Red symbols indicate internal characteristics.
Green symbols indicate external characteristics.

COLOR

D E F G H I J Faint Very Light Light

CLARITY

FL IF VS 1-2 VS 2-2 SI 1-2 I 1-3
Flawless Internally Flawless Very Very Slightly Included Very Slightly Included Slightly Included Included



ADDITIONAL GRADING INFORMATION

Polish EXCELLENT
Symmetry EXCELLENT
Fluorescence NONE
Inscription(s) LG751511613
Comments: This Laboratory Grown Diamond was created by Chemical Vapor Deposition (CVD) growth process. Type IIa



November 27, 2025
IGI Report No LG751511613
CUT CORNERED RECT. MODIFIED BRILLIANT
1.28 CARAT D
7.85 X 5.29 X 3.62 MM
Color Grade D
Clarity Grade VS 1
Table 68.4%
Girdle 4/5%
Medium
Pointed
Polish EXCELLENT
Symmetry EXCELLENT
Fluorescence NONE
Inscription(s) LG751511613
Comments: This Laboratory Grown Diamond was created by Chemical Vapor Deposition (CVD) growth process. Type IIa