



November 26, 2025

IGI Report Number LG75152812
ROUND BRILLIANT
LABORATORY GROWN DIAMOND
5.07 - 5.10 X 3.15 MM

0.50 CARAT
E
VVS 2
IDEAL
EXCELLENT
EXCELLENT
NONE
IGI LG75152812

Comments: As Grown - No indication of post-growth treatment. This Laboratory Grown Diamond was created by High Pressure High Temperature (HPHT) growth process. Type II

LABORATORY GROWN DIAMOND REPORT

November 26, 2025
IGI Report Number **LG75152812**
Description **LABORATORY GROWN DIAMOND**
Shape and Cutting Style **ROUND BRILLIANT**
Measurements **5.07 - 5.10 X 3.15 MM**

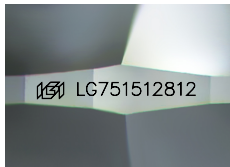
GRADING RESULTS

Carat Weight **0.50 CARAT**
Color Grade **E**
Clarity Grade **VVS 2**
Cut Grade **IDEAL**

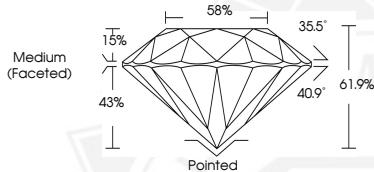
ADDITIONAL GRADING INFORMATION

Polish **EXCELLENT**
Symmetry **EXCELLENT**
Fluorescence **NONE**
Inscription(s) **IGI LG75152812**

Comments: As Grown - No indication of post-growth treatment. This Laboratory Grown Diamond was created by High Pressure High Temperature (HPHT) growth process. Type II



Sample Image Used



November 26, 2025

IGI Report Number LG75152812
ROUND BRILLIANT
LABORATORY GROWN DIAMOND
5.07 - 5.10 X 3.15 MM

0.50 CARAT
E
VVS 2
IDEAL
EXCELLENT
EXCELLENT
NONE
IGI LG75152812

Comments: As Grown - No indication of post-growth treatment. This Laboratory Grown Diamond was created by High Pressure High Temperature (HPHT) growth process. Type II

THIS DOCUMENT WAS PRODUCED WITH THE FOLLOWING SECURITY MEASURES: SPECIAL DOCUMENT PAPER, INK SCREENS, WATERMARK, BACKGROUND DESIGNS, HOLOGRAM AND OTHER SECURITY FEATURES NOT LISTED AND DO EXCEED DOCUMENT SECURITY INDUSTRY GUIDELINES.

For terms & conditions and to verify this report, please visit www.igi.org