

ELECTRONIC COPY

LABORATORY GROWN DIAMOND REPORT

November 26, 2025	
IGI Report Number	LG752511835
Description	LABORATORY GROWN DIAMOND
Shape and Cutting Style	SQUARE CUSHION MODIFIED BRILLIANT
Measurements	9.13 X 9.01 X 6.19 MM

GRADING RESULTS

Carat Weight	4.04 CARATS
Color Grade	G
Clarity Grade	VS 1

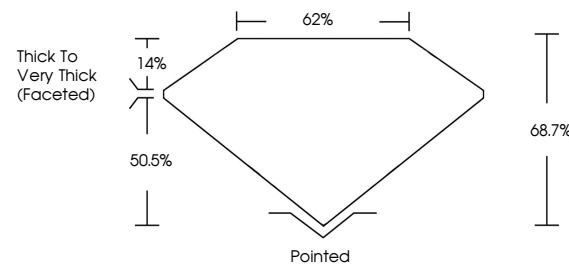
ADDITIONAL GRADING INFORMATION

Polish	EXCELLENT
Symmetry	EXCELLENT
Fluorescence	NONE
Inscription(s)	 LG752511835

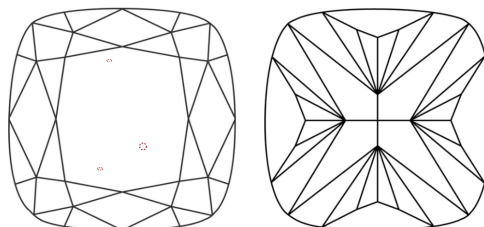
Comments: This Laboratory Grown Diamond was created by Chemical Vapor Deposition (CVD) growth process.
Type IIa

LG752511835
Report verification at lgi.org

PROPORTIONS

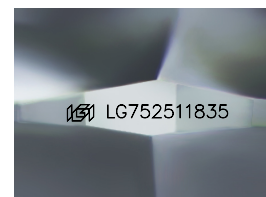


CLARITY CHARACTERISTICS



KEY TO SYMBOLS

Red symbols indicate internal characteristics.
Green symbols indicate external characteristics.



Sample Image Used

COLOR

D E F G H I J Faint Very Light Light

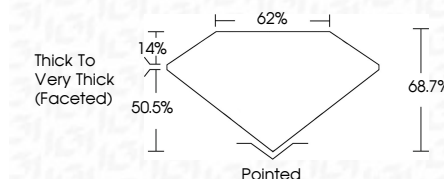
CLARITY

FL	IF	VVS ¹⁻²	VS ¹⁻²	SI ¹⁻²	I ¹⁻³
Flawless	Internally Flawless	Very Very Slightly Included	Very Slightly Included	Slightly Included	Included

LABORATORY GROWN DIAMOND REPORT



November 26, 2025	
IGI Report Number	LG752511835
Description	LABORATORY GROWN DIAMOND
Shape and Cutting Style	SQUARE CUSHION MODIFIED BRILLIANT
Measurements	9.13 X 9.01 X 6.19 MM
GRADING RESULTS	
Carat Weight	4.04 CARATS
Color Grade	G
Clarity Grade	VS 1



ADDITIONAL GRADING INFORMATION

Polish	EXCELLENT
Symmetry	EXCELLENT
Fluorescence	NONE
Inscription(s)	163 LG75251 1835
Comments: This Laboratory Grown Diamond was created by Chemical Vapor Deposition (CVD) growth process.	
Type IIa	



© IGI 2020, International Gemological Institute

FD - 10 20