



**INTERNATIONAL
GEMOLOGICAL
INSTITUTE**

ELECTRONIC COPY



November 26, 2025

IGI Report Number **LG752518021**

**EMERALD CUT
LABORATORY GROWN DIAMOND
5.83 X 4.16 X 2.76 MM**

**0.67 CARAT
F
VVS 2
EXCELLENT
EXCELLENT
NONE
None**
Inscription(s) **IGI LG752518021**

Comments: This Laboratory Grown Diamond was created by Chemical Vapor Deposition (CVD) growth process. Type IIa

LABORATORY GROWN DIAMOND REPORT

November 26, 2025
IGI Report Number **LG752518021**
Description **LABORATORY GROWN DIAMOND**
Shape and Cutting Style **EMERALD CUT**
Measurements **5.83 X 4.16 X 2.76 MM**

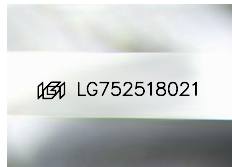
GRADING RESULTS

Carat Weight **0.67 CARAT**
Color Grade **F**
Clarity Grade **VVS 2**

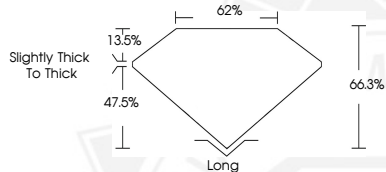
ADDITIONAL GRADING INFORMATION

Polish **EXCELLENT**
Symmetry **EXCELLENT**
Fluorescence **NONE**
Inscription(s) **IGI LG752518021**

Comments: This Laboratory Grown Diamond was created by Chemical Vapor Deposition (CVD) growth process. Type IIa



Sample Image Used



November 26, 2025

IGI Report Number **LG752518021**

**EMERALD CUT
LABORATORY GROWN DIAMOND
5.83 X 4.16 X 2.76 MM**

**0.67 CARAT
F
VVS 2
EXCELLENT
EXCELLENT
NONE
None**
Inscription(s) **IGI LG752518021**

Comments: This Laboratory Grown Diamond was created by Chemical Vapor Deposition (CVD) growth process. Type IIa



THIS DOCUMENT WAS PRODUCED WITH THE FOLLOWING SECURITY MEASURES: SPECIAL DOCUMENT PAPER, INK SCREENS, WATERMARK, BACKGROUND DESIGNS, HOLOGRAM AND OTHER SECURITY FEATURES NOT LISTED AND DO EXCEED DOCUMENT SECURITY INDUSTRY GUIDELINES.

For terms & conditions and to verify this report, please visit www.igi.org