



# INTERNATIONAL GEMOLOGICAL INSTITUTE

## LABORATORY GROWN DIAMOND REPORT

December 10, 2025

IGI Report Number

LG752526888

Description

LABORATORY GROWN DIAMOND

Shape and Cutting Style

SQUARE EMERALD CUT

Measurements

4.02 X 4.01 X 2.40 MM

### GRADING RESULTS

Carat Weight

0.38 CARAT

Color Grade

E

Clarity Grade

VVS 2

### ADDITIONAL GRADING INFORMATION

Polish

EXCELLENT

Symmetry

VERY GOOD

Fluorescence

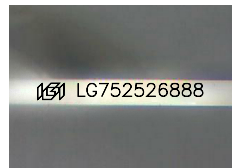
NONE

Inscription(s)

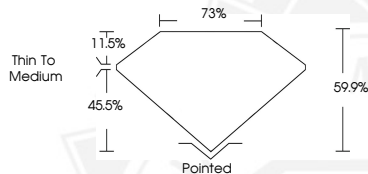
IGI LG752526888

Comments: This Laboratory Grown Diamond was created by Chemical Vapor Deposition (CVD) growth process. Type IIa

ELECTRONIC COPY



Sample Image Used



December 10, 2025

IGI Report Number LG752526888

SQUARE EMERALD CUT

LABORATORY GROWN DIAMOND

4.02 X 4.01 X 2.40 MM

Carat Weight 0.38 CARAT

Color Grade E

Clarity Grade VVS 2

Polish EXCELLENT

Symmetry VERY GOOD

Fluorescence NONE

Inscription(s) IGI LG752526888

Comments: This Laboratory Grown Diamond was created by Chemical Vapor Deposition (CVD) growth process. Type IIa



December 10, 2025

IGI Report Number LG752526888

SQUARE EMERALD CUT

LABORATORY GROWN DIAMOND

4.02 X 4.01 X 2.40 MM

Carat Weight 0.38 CARAT

Color Grade E

Clarity Grade VVS 2

Polish EXCELLENT

Symmetry VERY GOOD

Fluorescence NONE

Inscription(s) IGI LG752526888

Comments: This Laboratory Grown Diamond was created by Chemical Vapor Deposition (CVD) growth process. Type IIa



THIS DOCUMENT WAS PRODUCED WITH THE FOLLOWING SECURITY MEASURES: SPECIAL DOCUMENT PAPER, INK SCREENS, WATERMARK, BACKGROUND DESIGNS, HOLOGRAM AND OTHER SECURITY FEATURES NOT LISTED AND DO EXCEED DOCUMENT SECURITY INDUSTRY GUIDELINES.

For terms & conditions and to verify this report, please visit [www.igi.org](http://www.igi.org)