



December 3, 2025

IGI Report Number **LG752543651**

**ROUND BRILLIANT
LABORATORY GROWN DIAMOND**
5.11 - 5.16 X 3.23 MM

Carat Weight	0.52 CARAT
Color Grade	D
Clarity Grade	VVS 2
Cut Grade	VERY GOOD
Polish	GOOD
Symmetry	GOOD
Fluorescence	NONE
Inscription(s)	IGI LG752543651

Comments: As Grown - No indication of post-growth treatment. This Laboratory Grown Diamond was created by High Pressure High Temperature (HPHT) growth process. Type II

LABORATORY GROWN DIAMOND REPORT

December 3, 2025

IGI Report Number **LG752543651**

Description **LABORATORY GROWN DIAMOND**

Shape and Cutting Style **ROUND BRILLIANT**

Measurements **5.11 - 5.16 X 3.23 MM**

GRADING RESULTS

Carat Weight **0.52 CARAT**

Color Grade **D**

Clarity Grade **VVS 2**

Cut Grade **VERY GOOD**

ADDITIONAL GRADING INFORMATION

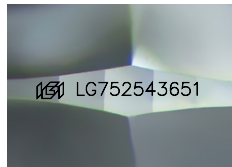
Polish **GOOD**

Symmetry **GOOD**

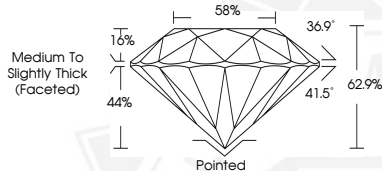
Fluorescence **NONE**

Inscription(s) **IGI LG752543651**

Comments: As Grown - No indication of post-growth treatment. This Laboratory Grown Diamond was created by High Pressure High Temperature (HPHT) growth process. Type II



Sample Image Used



December 3, 2025

IGI Report Number **LG752543651**

**ROUND BRILLIANT
LABORATORY GROWN DIAMOND**
5.11 - 5.16 X 3.23 MM

Carat Weight	0.52 CARAT
Color Grade	D
Clarity Grade	VVS 2
Cut Grade	VERY GOOD
Polish	GOOD
Symmetry	GOOD
Fluorescence	NONE
Inscription(s)	IGI LG752543651

Comments: As Grown - No indication of post-growth treatment. This Laboratory Grown Diamond was created by High Pressure High Temperature (HPHT) growth process. Type II



THIS DOCUMENT WAS PRODUCED WITH THE FOLLOWING SECURITY MEASURES: SPECIAL DOCUMENT PAPER, INK SCREENS, WATERMARK, BACKGROUND DESIGNS, HOLOGRAM AND OTHER SECURITY FEATURES NOT LISTED AND DO EXCEED DOCUMENT SECURITY INDUSTRY GUIDELINES.