



**INTERNATIONAL
GEMOLOGICAL
INSTITUTE**

LABORATORY GROWN DIAMOND REPORT

December 3, 2025
 IGI Report Number **LG752543747**
 Description **LABORATORY GROWN DIAMOND**
 Shape and Cutting Style **ROUND BRILLIANT**
 Measurements **5.49 - 5.52 X 3.42 MM**

GRADING RESULTS

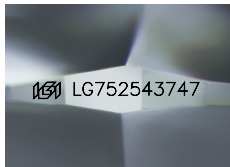
Carat Weight **0.66 CARAT**
 Color Grade **D**
 Clarity Grade **VVS 2**
 Cut Grade **VERY GOOD**

ADDITIONAL GRADING INFORMATION

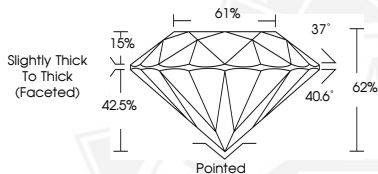
Polish **VERY GOOD**
 Symmetry **EXCELLENT**
 Fluorescence **NONE**
 Inscription(s) **IGI LG752543747**

Comments: As Grown - No indication of post-growth treatment. This Laboratory Grown Diamond was created by High Pressure High Temperature (HPHT) growth process. Type II

ELECTRONIC COPY



Sample Image Used



December 3, 2025
 IGI Report Number **LG752543747**
ROUND BRILLIANT
LABORATORY GROWN DIAMOND
5.49 - 5.52 X 3.42 MM
 Carat Weight **0.66 CARAT**
 Color Grade **D**
 Clarity Grade **VVS 2**
 Cut Grade **VERY GOOD**
 Polish **VERY GOOD**
 Symmetry **EXCELLENT**
 Fluorescence **NONE**
 Inscription(s) **IGI LG752543747**

Comments: As Grown - No indication of post-growth treatment. This Laboratory Grown Diamond was created by High Pressure High Temperature (HPHT) growth process. Type II



December 3, 2025
 IGI Report Number **LG752543747**
ROUND BRILLIANT
LABORATORY GROWN DIAMOND
5.49 - 5.52 X 3.42 MM
 Carat Weight **0.66 CARAT**
 Color Grade **D**
 Clarity Grade **VVS 2**
 Cut Grade **VERY GOOD**
 Polish **VERY GOOD**
 Symmetry **EXCELLENT**
 Fluorescence **NONE**
 Inscription(s) **IGI LG752543747**

Comments: As Grown - No indication of post-growth treatment. This Laboratory Grown Diamond was created by High Pressure High Temperature (HPHT) growth process. Type II

THIS DOCUMENT WAS PRODUCED WITH THE FOLLOWING SECURITY MEASURES: SPECIAL DOCUMENT PAPER, INK SCREENS, WATERMARK, BACKGROUND DESIGNS, HOLOGRAM AND OTHER SECURITY FEATURES NOT LISTED AND DO EXCEED DOCUMENT SECURITY INDUSTRY GUIDELINES.

For terms & conditions and to verify this report, please visit www.igi.org