



**ELECTRONIC COPY**

LG752561900  
Report verification at igi.org



December 24, 2025

IGI Report Number **LG752561900**

Description **LABORATORY GROWN DIAMOND**

Shape and Cutting Style **ROUND BRILLIANT**

Measurements **8.13 - 8.16 X 5.02 MM**

**GRADING RESULTS**

Carat Weight **2.04 CARATS**

Color Grade **D**

Clarity Grade **VVS 2**

Cut Grade **IDEAL**

December 24, 2025

IGI Report Number **LG752561900**

Description **LABORATORY GROWN DIAMOND**

Shape and Cutting Style **ROUND BRILLIANT**

Measurements **8.13 - 8.16 X 5.02 MM**

**GRADING RESULTS**

Carat Weight **2.04 CARATS**

Color Grade **D**

Clarity Grade **VVS 2**

Cut Grade **IDEAL**

**ADDITIONAL GRADING INFORMATION**

Polish **EXCELLENT**

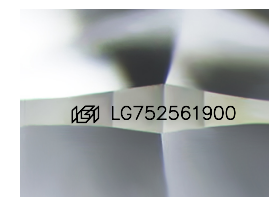
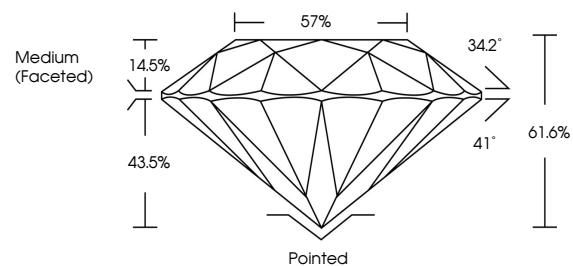
Symmetry **EXCELLENT**

Fluorescence **NONE**

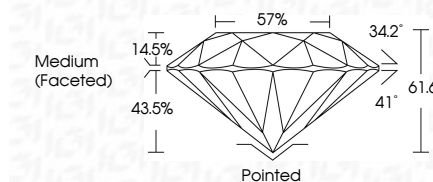
Inscription(s) **LG752561900**

Comments: This Laboratory Grown Diamond was created by Chemical Vapor Deposition (CVD) growth process. Type IIa

**PROPORTIONS**



Sample Image Used



**COLOR**

D E F G H I J Faint Very Light Light

**CLARITY**

| FL       | IF                  | VS <sup>1-2</sup>           | VS <sup>1-2</sup>      | SI <sup>1-2</sup> | I <sup>1-3</sup> |
|----------|---------------------|-----------------------------|------------------------|-------------------|------------------|
| Flawless | Internally Flawless | Very Very Slightly Included | Very Slightly Included | Slightly Included | Included         |

**ADDITIONAL GRADING INFORMATION**

Polish **EXCELLENT**

Symmetry **EXCELLENT**

Fluorescence **NONE**

Inscription(s) **LG752561900**

Comments: This Laboratory Grown Diamond was created by Chemical Vapor Deposition (CVD) growth process. Type IIa



**IGI**



|                           |                       |                  |           |
|---------------------------|-----------------------|------------------|-----------|
| December 24, 2025         | 2.04 CARATS           | D                | Pointed   |
| IGI Report No LG752561900 | 8.13 - 8.16 X 5.02 MM | VVS 2            | EXCELLENT |
| ROUND BRILLIANT           | Color Grade           | IDEAL            | EXCELLENT |
|                           | Clarity Grade         | 61.6%            | NONE      |
|                           | Depth                 | 57%              | NONE      |
|                           | Table                 | Medium (Faceted) | None      |
|                           | Girdle                | None             | None      |
|                           | Culet                 | None             | None      |
|                           | Polish                | None             | None      |
|                           | Symmetry              | None             | None      |
|                           | Fluorescence          | None             | None      |
|                           | Inscription(s)        | None             | None      |

Comments: This Laboratory Grown Diamond was created by Chemical Vapor Deposition (CVD) growth process. Type IIa