



INTERNATIONAL GEMOLOGICAL INSTITUTE

ELECTRONIC COPY

LABORATORY GROWN DIAMOND REPORT

November 29, 2025

IGI Report Number

LG752570706

Description

LABORATORY GROWN DIAMOND

Shape and Cutting Style

ROUND BRILLIANT

Measurements

3.76 - 3.79 X 2.32 MM

GRADING RESULTS

Carat Weight

0.21 CARAT

Color Grade

D

Clarity Grade

VVS 2

Cut Grade

VERY GOOD

ADDITIONAL GRADING INFORMATION

Polish

VERY GOOD

Symmetry

VERY GOOD

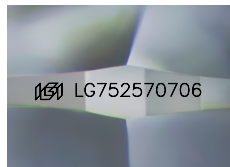
Fluorescence

NONE

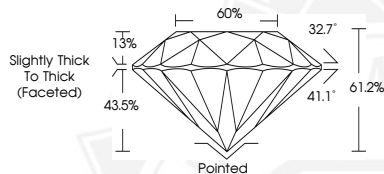
Inscription(s)

IGI LG752570706

Comments: This Laboratory Grown Diamond was created by Chemical Vapor Deposition (CVD) growth process. Type IIa



Sample Image Used



November 29, 2025

IGI Report Number LG752570706

ROUND BRILLIANT

LABORATORY GROWN DIAMOND

3.76 - 3.79 X 2.32 MM

Carat Weight 0.21 CARAT

Color Grade D

Clarity Grade VVS 2

Cut Grade VERY GOOD

Polish VERY GOOD

Symmetry VERY GOOD

Fluorescence NONE

Inscription(s) IGI LG752570706

Comments: This Laboratory Grown Diamond was created by Chemical Vapor Deposition (CVD) growth process. Type IIa



November 29, 2025

IGI Report Number LG752570706

ROUND BRILLIANT

LABORATORY GROWN DIAMOND

3.76 - 3.79 X 2.32 MM

Carat Weight 0.21 CARAT

Color Grade D

Clarity Grade VVS 2

Cut Grade VERY GOOD

Polish VERY GOOD

Symmetry VERY GOOD

Fluorescence NONE

Inscription(s) IGI LG752570706

Comments: This Laboratory Grown Diamond was created by Chemical Vapor Deposition (CVD) growth process. Type IIa



THIS DOCUMENT WAS PRODUCED WITH THE FOLLOWING SECURITY MEASURES: SPECIAL DOCUMENT PAPER, INK SCREENS, WATERMARK, BACKGROUND DESIGNS, HOLOGRAM AND OTHER SECURITY FEATURES NOT LISTED AND DO EXCEED DOCUMENT SECURITY INDUSTRY GUIDELINES.

For terms & conditions and to verify this report, please visit www.igi.org