



ELECTRONIC COPY

LG752573980
Report verification at igi.org



December 9, 2025

IGI Report Number **LG752573980**

Description **LABORATORY GROWN DIAMOND**

Shape and Cutting Style **PRINCESS CUT**

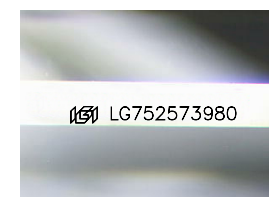
Measurements **8.66 X 8.65 X 6.16 MM**

GRADING RESULTS

Carat Weight **4.05 CARATS**

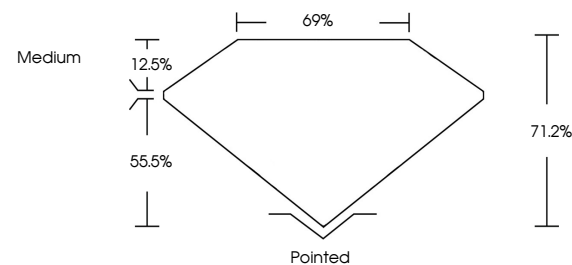
Color Grade **D**

Clarity Grade **VS 1**

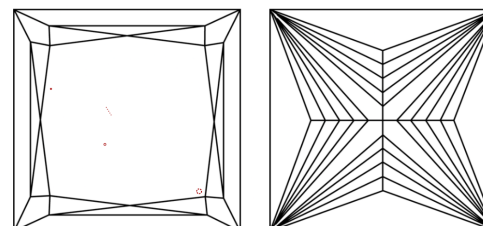


Sample Image Used

PROPORTIONS



CLARITY CHARACTERISTICS



KEY TO SYMBOLS

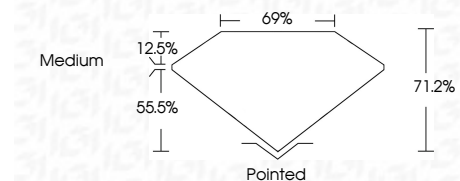
Red symbols indicate internal characteristics.
Green symbols indicate external characteristics.

COLOR

D E F G H I J Faint Very Light Light

CLARITY

FL	IF	VS ¹⁻²	VS ¹⁻²	SI ¹⁻²	I ¹⁻³
Flawless	Internally Flawless	Very Very Slightly Included	Very Slightly Included	Slightly Included	Included



ADDITIONAL GRADING INFORMATION

Polish **EXCELLENT**

Symmetry **EXCELLENT**

Fluorescence **NONE**

Inscription(s) **IGI LG752573980**

Comments: This Laboratory Grown Diamond was created by Chemical Vapor Deposition (CVD) growth process. Type IIa



IGI



December 9, 2025
IGI Report No LG752573980
PRINCESS CUT

4.05 CARATS
D

8.66 X 8.65 X 6.16 MM
Carat Weight

D
Color Grade

VS 1
Clarity Grade

71.2%
69%
Medium
Depth
Table
Girdle

Pointed
EXCELLENT
EXCELLENT
NONE
IGI LG752573980
Culet
Polish
Symmetry
Fluorescence
Inscription(s)

Comments: This Laboratory Grown Diamond was created by Chemical Vapor Deposition (CVD) growth process. Type IIa